



SMALL ARMS

IDENTIFICATION SERIES

**7.62mm L1 & C1
F.A.L. RIFLES**

**Parts Identification & Lists, L1 & C1 Series Notes,
Exploded Parts Drawings, Descriptions,
Accessories & Fittings**

**S.A.I.S.
No. 12**

Ian Skennerton

SMALL ARMS IDENTIFICATION SERIES

Based on service Identification Lists and Armourers' Instructions, the components & accessories are detailed with stripping, parts identification and disassembly drawings. The S.A.I.S. have technical information not available before in a single reference. The 11 x 8¼-in. size with plastic laminated cover, thread-sewn binding and art paper makes the ideal study or workshop reference and manual.

- **No. 1 — .303-in. RIFLE N^o. 1** Skennerton Updated & reprinted 2004
The Short Magazine Lee-Enfield series as made in England, Australia and India until after WW 2.
- **No. 2 — .303-in. RIFLE N^o. 4** Skennerton Updated & reprinted 2002
Wartime successor of the No. 1 S.M.L.E., manufactured in Britain, Canada and the U.S.A.
- **No. 3 — 9mm AUSTEN & OWEN SMG's** Skennerton
Australia's indigenous development and production, during World War 2.
- **No. 4 — .303-in. RIFLE N^o. 5 Mk I** Skennerton
The renowned British 'jungle carbine', its successes along with its shortcomings.
- **No. 5 — .303-in. BREN LIGHT MACHINE GUN** Skennerton Updated & reprinted 2004
Manufactured in Britain, Canada and Australia, the different models and parts variations.
- **No. 6 — BRITISH SERVICE SWORDS & LANCE PATTERNS** Skennerton
An illustrated synopsis of the service swords, cutlasses and lances since the 1850's.
- **No. 7 — .303-in. MAGAZINE LEE-METFORD & LEE-ENFIELD RIFLES & CARBINES** Skennerton
From 1888 until the advent of the Short Magazine Lee-Enfield, the standard Empire issue rifle.
- **No. 8 — .303-in. VICKERS Mk I MACHINE GUN** Skennerton
Made in England and Australia from 1912 until 1945, one of history's most reliable machine guns.
- **No. 9 — .455-in. WEBLEY N^o. 1 REVOLVERS** Skennerton
An illustrated precis of the renowned British revolver in service from 1915 until about 1950.
- **No. 10 — .303-in. PATTERN 1914 RIFLE & SNIPING VARIANTS** Skennerton
Manufactured in the U.S.A. during the Great War, the P'14 later served as a 2nd line arm.
- **No. 11 — 9mm STEN MACHINE CARBINE MARKS I, I*, 2 & 3** Skennerton
Britain's wartime expedient sub-machine gun and its early production variants .
- **No. 12 — 7.62mm L1 & C1 F.A.L. RIFLE** Skennerton
A comparative study of the British, Canadian & Australian production FN inch-FAL series.
- **No. 13 — SPECIAL SERVICE LEE-ENFIELDS** Skennerton
.45 De Lisle Commando carbine and the wartime expedient gas-operated autoloaders.
- **No. 14 — .303-in. LEWIS MACHINE GUN** Skennerton
An American design manufactured by BSA Guns; the Great War ground & air pattern guns.
- **No. 15 — .450 & .303-in. MARTINI RIFLES & CARBINES** Skennerton
The British Empire's first purpose-built breech-loading general service issue longarm.
- **No. 16 — BRITISH EMPIRE CADET & TRAINING RIFLES** Skennerton
A synopsis of the British, Australian, Canadian & New Zealand issue training rifles.
- **No. 17 — .45 THOMPSON SUB-MACHINE GUN** Skennerton
U.S. & British Commonwealth issue of the Model 1928A1 and M1 variants during World War 2.
- **No. 18 — 7.62mm L42A1 SNIPER, L39, 2A & LEE-ENFIELD CONVERSIONS** Skennerton
British & Ishapore NATO era development of the No.1 and No.4 rifle series.
- **No. 19 — AUSTRALIAN S.M.L.E. VARIATIONS** Skennerton & Labudda
Specific Lithgow and WW2 feeder factory production along with Lithgow / Slazenger sporters.



SMALL ARMS

IDENTIFICATION SERIES

**7.62mm L1 & C1
F.A.L. RIFLES**

**Parts Identification & Lists, L1 & C1 Series Notes,
Exploded Parts Drawings, Descriptions,
Accessories & Fittings**

REFERENCES:

- 'A.E.M.E. Instructions' & "E.M.E. Instructions', various
- 'Australian 7.62mm Rifles' Technical Brochure
- 'British Small Arms of World War 2' *Ian Skennerton* 1988 SKENNERTON
- 'North American FALs' *Blake Stevens* 1987 COLLECTOR GRADE
- 'Parts List & RCME Scales - Rifle 7.62 C1, C1A1, C1D & C1A1D' 1963 CANADA
- 'Quality Assurance Instruction Issue No. 1' MOD 1972 U.K.
- 'Repair Schedule - Rifle, 7.62mm, FN, C1A1 & C1A1D' *National Defence* CANADA
- 'Rifle, L1A1, Illustrated Parts Catalogue' 1982 Australia
- 'Rifle, L1A1, Illustrated Spare Parts List' 1961 U.K.
- 'Rifle 7.62mm L1A1, Accessories & Conversion Kits' 1971 DEFENCE COUNCIL
- 'SLR - Australia's FN FAL' *Ian Skennerton & David Balmer* 1989 SKENNERTON
- 'UK & Commonwealth FALs' *Blake Stevens* 1980 COLLECTOR GRADE
- 'User Handbook for Rifle, 7.62mm L1A1' 1959
- Various RSAF Enfield Inspectorate Drawings & Records H.M.S.O.
- 'Weapons - Rifle, Bayonet and Automatic Rifle' *National Defence* CANADA

ACKNOWLEDGMENTS:

- Herbert Woodend, M.O.D Pattern Room, Royal Ordnance, Nottingham, England
- John Wray, Lithgow S.A.F., Australia
- Gordon Fuad, Brisbane, Australia
- John McLean, Brisbane, Australia
- Robert Mitchell, Brisbane, Australia
- Warren Wheatfield, Sudbury, Canada
- Kevin Adams, New Zealand

© *Ian Skennerton, 2001*

All rights reserved. No portion of this publication may be reproduced, stored in a retrieval system, or transmitted in any form or by any means, electronic, mechanical, photocopying, recording, or otherwise, without the prior permission in writing of the author and publisher.

National Library of Australia

Cataloguing-in-Publication data:

Skennerton, Ian D.

ISBN 0 949749 29 X

Typesetting, layout and design by Ian D. Skennerton.

Published by Ian D. Skennerton, P.O. Box 80, Labrador 4215, Australia.

Printed and bound by Thai Watana Panich Press Co. Ltd., Rama 1 Rd., Bangkok, Thailand.

Distributors:

North America—
Arms & Militaria Press
PO Box 5659
Grants Pass
OR 97527
USA

Great Britain—
Selous Books
40 Station St.
Aldershot
Hampshire GU11 1HT
England

Australia—
Ian D. Skennerton
PO Box 80
Labrador
Qld. 4215
Australia

Website: www.skennerton.com

E-mail: idskennerton@hotmail.com

CONTENTS

L1 & C1 Service F.A.L. Genealogy	5
Model Identification	8
Rifle Specifications	12
User Guide	13
Key Plate	14
Body Assembly	16
Barrel Assembly	18
Handguards & Carry Handle	20
Breech Block & Carrier	22
Safety Sear & Backsight	24
Trigger Mechanism & Cover	26
Trigger Mechanism	28
Butt Assembly	30
Accessories & Ancillaries	32
Blank-fire Attachment	36
Conversion Unit	38
Trilux Sightunit	40
Stripping & Assembly	44
Parts Manufacture Identification	47



From left— F.N. made X8E1 trials rifle, early Enfield production L1A1 rifle and Canadian C1 production at Long Branch. Note the different dustcover, backsight and carry handle on the C1. M.O.D. Pattern Room

7.62mm L1 & C1 F.A.L. RIFLE SERIES

L1 & C1 SERVICE F.N. F.A.L. RIFLE GENEALOGY

Great Britain, her Empire and the evolving Commonwealth had witnessed the .303 Magazine Lee as their prime service small arm from the late 1880's. Changes to the cartridge and rifle design nearly came about at least twice, but international conflict resulted in the .276 1913 program and post-Great War changes being shelved; the rimmed .303 round was retained for some seventy years.

After high-profile Ideal Calibre Panel deliberation and extensive tests, the 7mm (.280/30) round and bullpup EM2 came close to making the change in the mid 1950's; self-loading rifle trials had been well under way in England soon after the end of the 2nd World War. The scene was set for the introduction of a rimless cartridge and a self-loading rifle but politics and pressure from the new NATO alliance resulted in the final direction towards the .30 T65 round (later adopted as the 7.62 x 51mm NATO) and Belgian Fabrique Nationale's Fusil Automatique Legere or Light Automatic Rifle with its tilting breech-block system.

Belgian gas-operated self-loading rifle development by Monsieur D.J. Saive was well under way before the war and after its conclusion, the S.A.F.N. Model 1949 was successfully introduced. The ensuing F.A.L. rifle has since seen worldwide manufacture and adoption by some ninety countries however there are two different standards, metric and inch systems. Britain and the Commonwealth adopted the inch measurement standard.

With Canada and Australia desirous of maintaining the same rifle, a Rifle Steering Committee co-ordinated trans-Atlantic and antipodean efforts in search of a uniform firearm and full interchangeability of component parts and fittings. As early as October 1946, there were standardization conferences on a new rifle by the U.S., Britain and Canada and in November 1953, Britain ordered F.N. manufacture X8E1 and X8E2 self-loading rifles for extensive troop trials. The 7.62mm NATO round was adopted the following month, in December 1953, and Canada then purchased F.N. made EX1 and EX2 rifles for troop trials too.

In February 1954, Great Britain adopted the F.N. F.A.L. rifle as 'Rifle, 7.62mm, L1A1' and three months later bought some heavy barrel F.N. F.A.L.O. models for consideration. Canada purchased manufacturing rights from Fabrique Nationale in June 1954 and Australian production planning commenced in 1955 with the arrival of the first sample F.A.L. rifle at Lithgow S.A.F.

Rifle Steering Committee meetings commenced in May of 1955 to co-ordinate production between the three countries with the first meeting held at Enfield Lock on 16-17th May. Subsequent meetings were held at Long Branch in Canada, and Lithgow as well as in Sydney and Melbourne in Australia, until 1962.

Canada introduced the C1 in September 1956 and started issuing the rifle one month later. Drawings for the new rifle were sealed in March 1957 after which it was adopted and R.S.A.F. Enfield and B.S.A. Guns commenced production in England. The first heavy-barrel C2 came out from Long Branch in September 1958 while Australia's first locally made samples of the L1A1 came out in October 1958. Deliveries to the Australian Armed Forces commenced in March 1959.

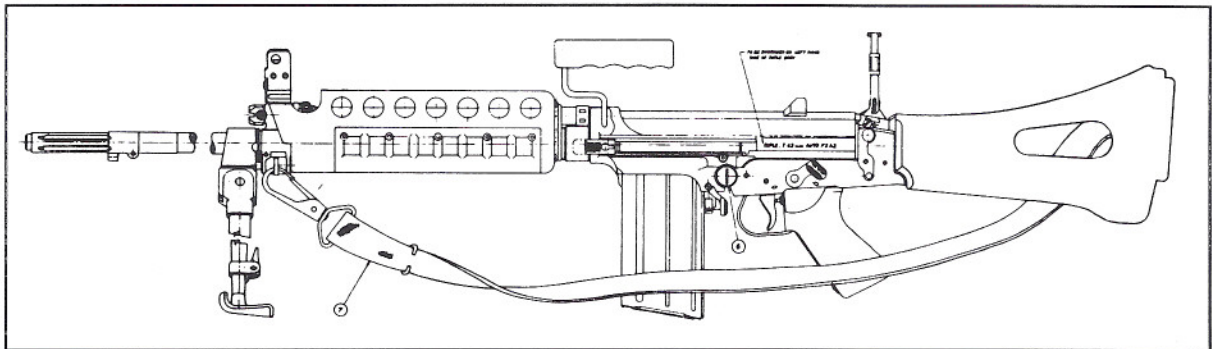
In the long tradition of rapidly updating new service arms in the British Ordnance system, it was not long before improvements were made and the nomenclature updated; in Canada the C1A1 was introduced in 1959. Australia too produced a heavy-barrel LAR model

designated the L2A1 with a larger capacity magazine, commencing in 1962. A special recoil reducer muzzle attachment was made by Lithgow for Malayan contract L2 rifles. However, Britain did not adopt or manufacture the heavy barrel light automatic rifle.

A general listing of the British and Commonwealth F.A.L. variants and their relative designations will be found on page 8. A quick reference to the models will likely make the ensuing text more readily understood, along with reference to the other Commonwealth nations that adopted or produced the inch-system F.A.L. Model identification of most of the following inch-F.A.L. service rifles is nominated on the left side of the upper receiver (action body) where the rifle designation is stamped along with factory indicators and in many cases, the year of manufacture.

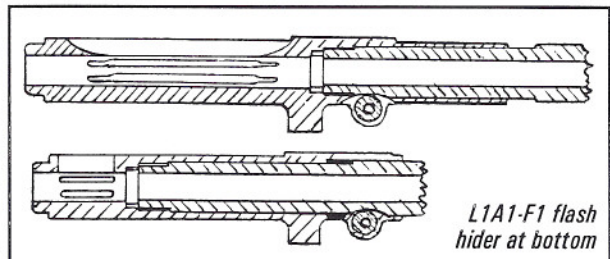
The L1 rifle was produced by three different makers in Great Britain, at the Royal Small Arms Factory, Enfield (UE), Birmingham Small Arms (UB) and the Royal Ordnance Factory, Fazakerley (UF).

A number of improvements were made during the course of production of the L1 and C1 rifles as the three countries continued to collaborate. A large percentage of these changes relate to manufacturing processes and alternatives over a quarter century of production. Notable changes were made to the gas cylinder and gas regulator, ejector, extractor, hand guards, carry handle, locking body catch, bolt hold-open catch and sling swivels. The one-piece firing pin was replaced by a two-piece model to remedy breakages.



Australia developed progressive variants of the L2 Light Automatic Rifle, designated the F2A2. This evolved through X1, X2 and X3 models, the X2 F2A2 is illustrated above. This LAR features a straight-line stock, barrel mounted bipod, higher line of sight and other user improvements. Although it is reported to have been very successful, the program was shelved with only about 12 examples being assembled.

Other Australian models of the L1 include the L1A1-F1 with its shorter flash hider to reduce the overall length of the rifle, mostly exported to Papua-New Guinea. There was also a special, single shot model for rifle club competition, designated the SAF Target Rifle and the L1A1-A was an export model with no safety sear, deemed to have no automatic capability. This was done especially for the U.S. export market where most of the near-200 production was eventually shipped.



In Britain, the 'black plastic' butt, handguards and pistol grip were introduced in the early 1970's and some of these fittings were acquired by other L1 users. Actually the material is

a high impact grade nylon containing a black organic dye. The handguard material is different in that it is a heat and light stabilized moulding grade nylon which also contains 33% by weight of low alkali glass fibre. The kit comprises pistol grip and cover, carry handle, butt, butt plate, buttplate plug and left and right handguards.

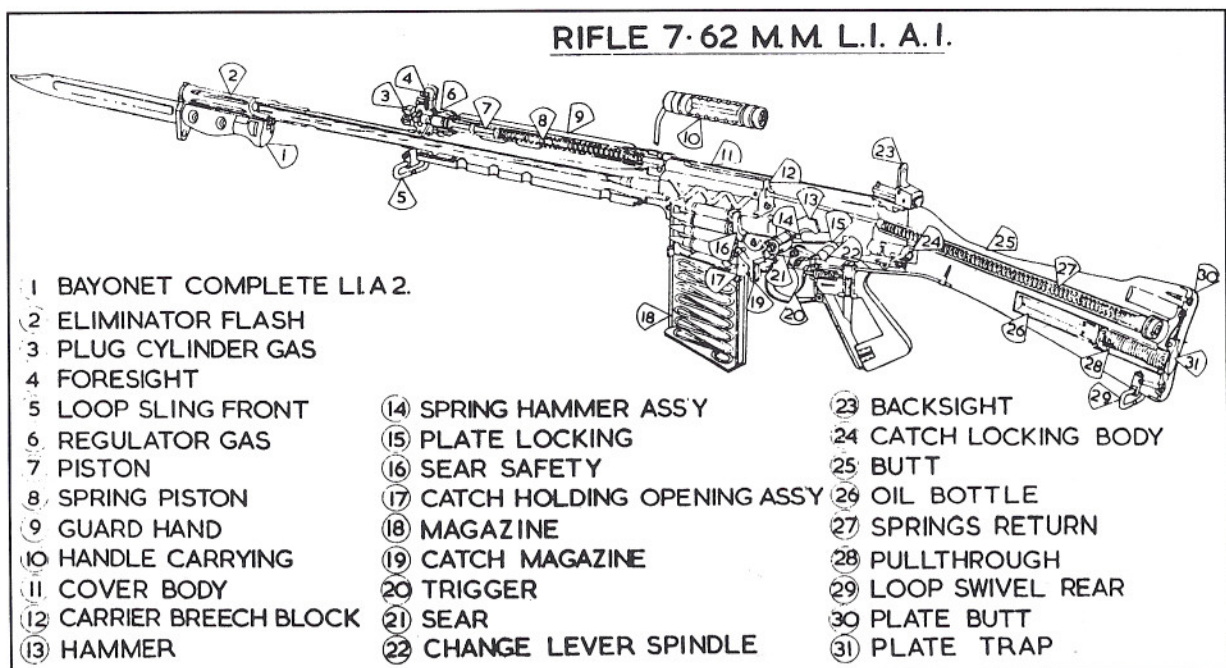
The nylon furniture was found to be more suitable to extremes of climate than wood and in Canada and Arctic climates, the triggerguard could be dispensed with or folded into the pistol grip so that the rifle could be operated readily whilst wearing thick gloves or mittens. Nylon readily replaced wood as the insulation material for the hand-fitting carry handle, in British and then Australian service, because of its better durability.

Canada applied changes to the C1 which resulted in advances in nomenclature too. Improvements to the ejector block mooted an advance from C1A1 to C1A2 in the mid-1960s although the name change was eventually shelved. A later variant, the C1A1D had a modified fire selector like the C2, which enabled full auto fire and was issued aboard Canadian ships.

In 1963, India commenced production of the F.N. F.A.L. at the Rifle Factory Ishapore, hence their RFI marking. India's Ishapore FALs are a curious combination of inch measurements and metric dimensions which renders component parts generally interchangeable among the sub-continental models but non-interchangeable with those of British, Canadian or Australian manufacture. The Indian model is designated the Rifle, 7.62mm 1A.

New Zealand purchased and issued Lithgow-made L1A1 and L2A1 rifles and they also had some accessories and tools produced locally.

A variety of unit optical sights, infra-red and night vision devices, luminous and special telescopic sights were used with the L1 and C1 rifle series. An even wider array of blank firing adaptors, recoil reducers, grenade dischargers and tools were issued with the rifles in over 20 countries where they served. Due to the length of time the L1 was in service, production in three factories in England as well as at Long Branch, Lithgow and Ishapore, the sizeable variety of accessories and ancillaries is almost worthy of a study in its own right.



MODEL IDENTIFICATION

Trials

Rifle X8E1	Trials, generally U.K. and Australasia, metric
Rifle X8E2	Trials, fitted with telescope sight & offset iron sights, metric
Rifle X8E3	Trials, variant of X8E2, metric
Rifle X8E5	Trials, modified cocking handle, metric
Rifle X14E1	Trials, eventual L1A1 configuration, inch-measurement
Rifle EX 1	Trials, Canada, equivalent of British X8E1, metric
Rifle EX 2	Trials, Canada, equivalent of British X8E2, metric
Bayonet X2E1	Trials, FN manufacture, stamped on underside of grip tang
Scabbard, Bayonet X1E1	Trials, FN manufacture, stamped on body

Production, Great Britain

Rifle 7.62mm L1A1	Regular service issue
Rifle 7.62mm L12A1	H&K .22 conversion
Rifle 7.62mm L23A1	Instructional D.P., sectionised
Rifle 7.62mm L25A1	Instructional D.P.
Rifle 7.62mm L26A1	Instructional, variant of L25A1
Bayonet L1A1	Original model, sheet steel grips, brazed pommel
Bayonet L1A2	Production alternative with riveted pommel
Bayonet L1A3	Brazed pommel, recess in pommel for shorter locking bolt
Bayonet L1A4	Riveted pommel, recess in pommel for shorter locking bolt

Production, Canada

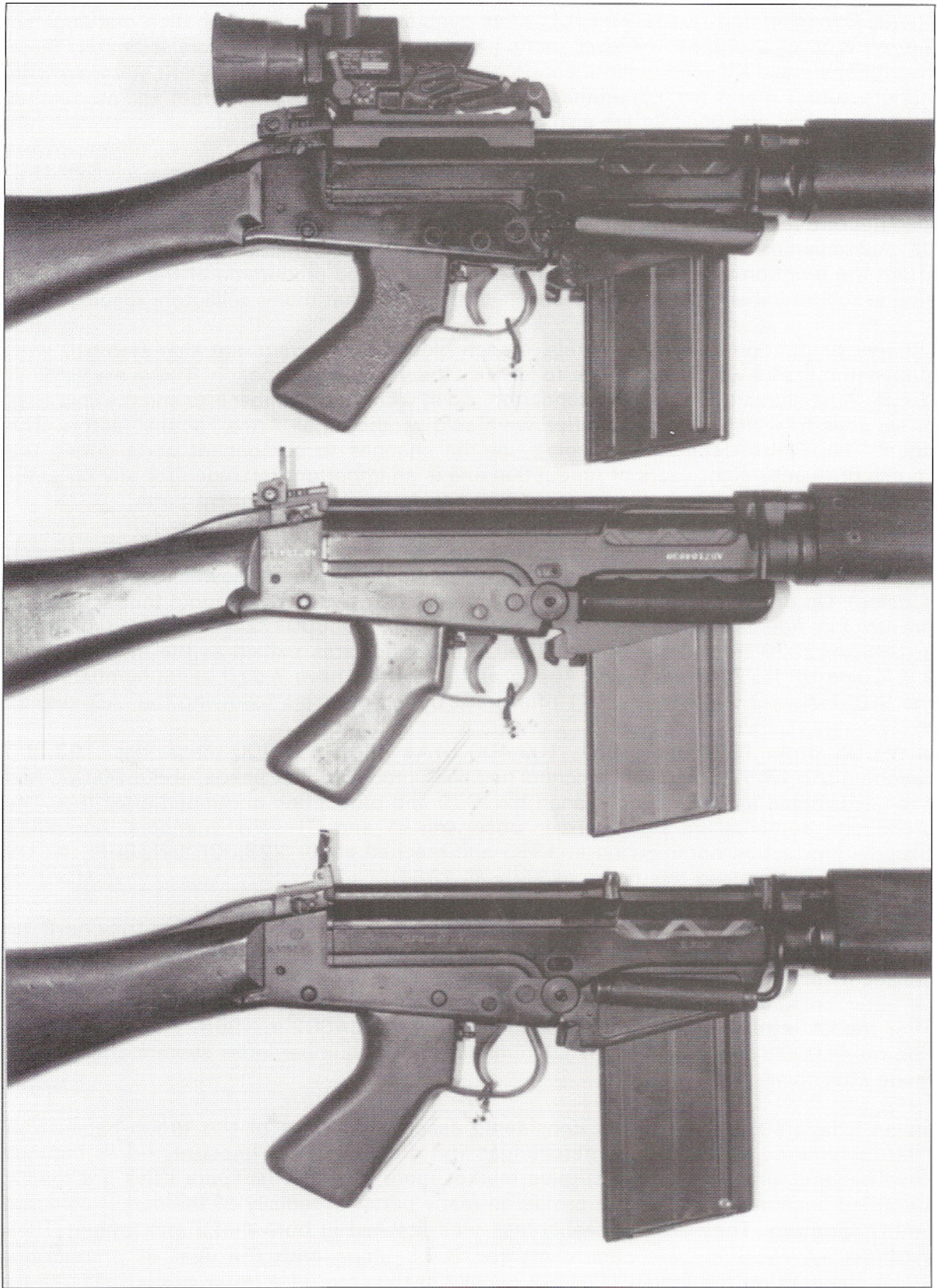
Rifle 7.62mm C1	Early model designation
Rifle 7.62mm C1A1	Minor components & manufacture changes
Rifle 7.62mm C1A1D	Selector switch enables auto burst fire too
Rifle 7.62mm C2	Heavy barrel auto, early model designation
Rifle, 7.62mm C2A1	Heavy barrel auto, minor components & manufacture changes
Bayonet C1	Similar to British & Australian L1A2

Production, Australia

Rifle, 7.62mm L1A1	Regular service issue
Rifle, 7.62mm L2A1	Heavy barrel auto
Rifle, 7.62mm L1A1-F1	PNG issue with shorter flash hider
Rifle, 7.62mm L1A1A	Commercial export model for USA, no sear safety
SAF Lithgow Target Rifle	Commercial production for Rifle Club purchases
Bayonet L1A2	Same style as British L1A2

Production, India

Rifle 7.62mm IA	Particular to India, composite of both inch & metric systems
Bayonet 1A	Like British L1A2 but has wooden grips
Bayonet 1A later model	Like British L1A4 but has wooden grips
Bayonet 1A, long blade	Like L1A4 with wood grips, but blade is 2-in. longer at 10 in.



Top to bottom— 7.62mm L1A1 rifles of British, Australian and Canadian manufacture. UK makers' indicators are UE for Enfield, UB for BSA and UF for Fazakerley. The next rifle down is Australian production at Lithgow while the bottom example is a Canadian Long Branch. The Trilux SUIT sight fitted at top was an option. M.O.D. Pattern Room

British, Canadian and Australian F.A.L. rifles generally have their designation markings on the left side of the upper receiver (action body) along with the factory indicator. Such inscriptions make for ready identification and many component parts were stamped with manufacturer's marks and sometimes the year of production as well. Proof and production marks on prime components are also good indicators in identification.

Because parts are interchangeable, many of the L1 rifles available in the civilian U.S. marketplace today are rebuilds which utilise components from different sources. New manufacture receivers in the United States are generally set up with components parts of UK, Australian or to a much lesser extent, Canadian origin. While this may not necessarily affect the function of a rebuilt L1 because the design and production of the rifle is based around full interchangeability, the result falls short of what many collectors require.

Lithgow production receivers, barrels, breech blocks and carriers are also stamped with steel batch marks which also serve to identify the years of production. These are listed in 'S.L.R.- Australia's FN FAL' by Ian Skennerton, along with serial number lists and the countries or services to which L1 and L2 rifles were sold by the Small Arms Factory factory. The 'S.L.R.' book also details a chronology of the changes to component parts during the course of twenty-eight years of production and is an important reference for any collector or shooter with a Lithgow rifle or one which has Australian component parts.

Rifle serial numbers were usually engraved on the upper receiver, trigger housing, breech block and breech block carrier and stamped or engraved on the lower receiver (trigger housing). On British and Australian production, the first two letters denote the factory and the next two figures indicate the year of production, *e.g.* AD6800172 is Australian production or UB60A92920 from Great Britain. The UE code indicates Enfield as the maker, UB for B.S.A. and UF for Fazakerley. The Australian L1A1 rifles have 7-digit serial numbers after the 'AD' indicator while their L2A1 rifles have 6-digit numbers following the 'AD' prefix.

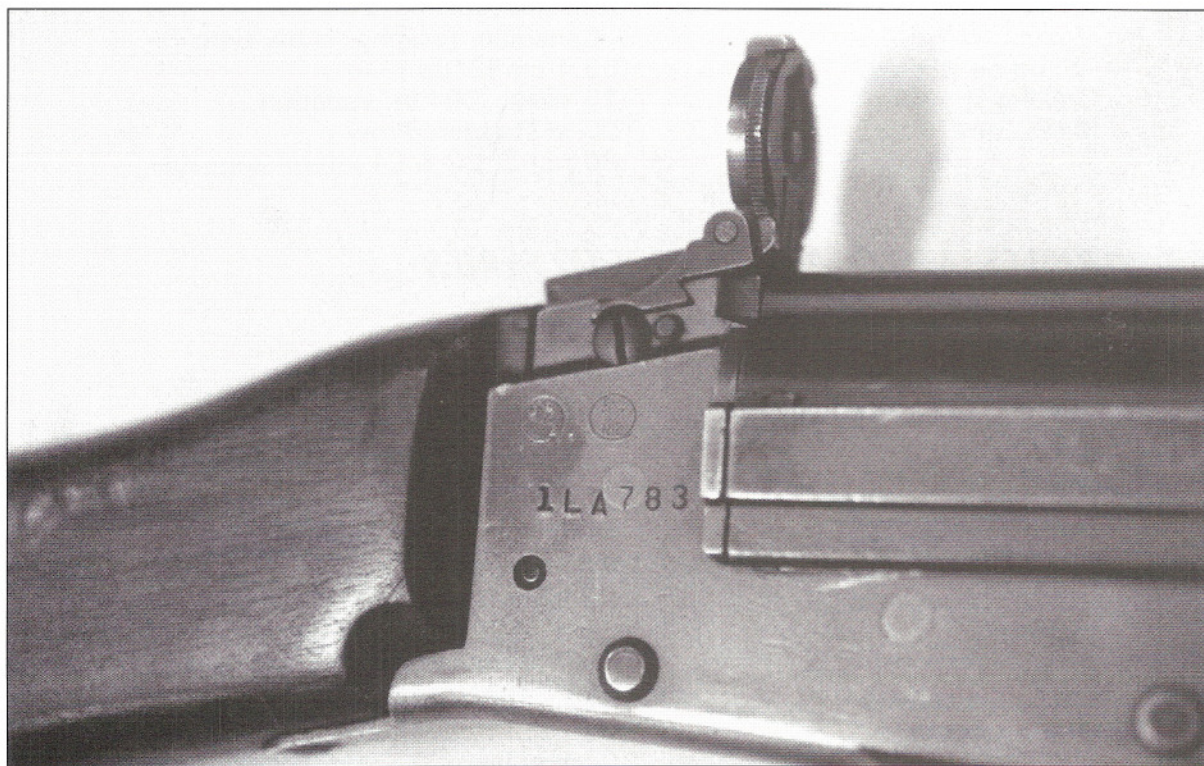
In the UK, from 1957 until 1961, 103,400 L1A1 rifles, 551,700 magazines, 108,300 bayonets and 15,520 grenade launchers had been produced. In Canada, about 90,000 had been assembled at CAL's Long Branch by 1979 and production continued after this. The production numbers are significant in observing L1 and C1 serial numbers. Australia's Lithgow production commenced in 1959 and reached about 223,000 by 1986; the UK factories had produced this figure as early as 1964.

Canadian rifles do not incorporate the year indicator in the serial number but they have the letter 'L' for Long Branch ahead of the last four numbers, *e.g.* 8L3050 and the numbers run consecutively from 1956 until end of production. The Long Branch C2 rifles incorporate an 'A' letter, presumably to indicate 'automatic'. The automatic rifle series used three numbers after the LA letters, *e.g.* 2LA690, commencing with OLA002 in 1958. The very first C2 rifle no. OL0001 duplicated an FN C1 number and the number/letter system change was made after this.

Indian Ishapore rifles, while not considered essentially a part of this group because of their inch/metric mix and non-interchangability, are sometimes encountered as batches have become available on the surplus market more recently. Ishapore rifles are readily identified because of the square profile on many parts, especially of the darker coloured timber furniture. They are noticeably less well finished in both metal and timber. Their 7.62mm 1A receivers are clearly marked R.F.I. along with the year of production. Serial numbers on the Indian rifles are usually in the form of a letter prefix followed by the numbers, *e.g.* F7631. South African 7.62mm R1 rifles are metric FAL's rather than the inch system in service with other Commonwealth countries.



Canadian C2 at top compared with Lithgow L2A1 rifle below. The tangent rear sight originated in Canada. Note the different auto rifle carry handle, allowing for the different centre of gravity. M.O.D. Pattern Room



Canadian C2 auto rifle close-up. Note Canadian C1 'snow' sight and special serial number. Long Branch rifles incorporate an 'L' before the last 4 numbers, also note the Canadian distinctive proofs. M.O.D. Pattern Room

SPECIFICATIONS

RIFLES, 7.62^{mm}, L1, L1A1, C1 & C1A1 SERIES

Lengths:			
Rifle, overall	113.7 cm [44.75 in.] <i>with normal butt</i>
Barrel (w/o flash hider)	53.4 cm [21 in.]
Bayonet, blade	20.3 cm [8 in.]
Butts, short	24.76 cm [9.75in.]
normal	26.03 cm [10.25in.]
long	27.94 cm [10.75in.]
extra long	29.22 cm [11.5 in.]
Weights:			
Rifle	4.22 kg. [9 lb 6 oz] <i>with empty magazine</i>
Rifle with full mag & bayonet	5.24 kg [11 lb. 10 oz.]
Bayonet	0.32 kg [11.5 oz.]
Trigger pull-off	6 - 9 lb.
Barrel:			
Calibre	7.62mm [.308-inch]
Rifling	6 groove, Enfield concentric
Rifling twist	R.H., 1 turn in 30.5 cm [12 in.]
Muzzle Velocity	853 m/sec [2,800 ft./sec.] <i>approximate</i>
Sights:			
Foresight	Blade, adjustable elevation
Backsight	Aperture, folding, 200-600 yd. Canadian, rotating, snow type
Sighting Radius	53.4 cm [21 in.]
Locking shoulder	15 sizes, .001 in. variation
Magazine	20-rd staggered row 30-rd L2, C2 & L4 interchangeable

RIFLES, AUTO, 7.62^{mm}, L2 & C2 SERIES

Lengths:			
Rifle, overall	113 cm [44.7 in.]
Barrel	53.4 cm [21 in.]
Weights:			
Rifle	6.3 kg [14 lb. 5 oz.]
Sights:			
Foresight	Blade, adjustable elevation
Backsight	Aperture, tangent, 1000 m on dustcover, L2A1 C2 sight is also graduated to 1,000 metres
Magazine	30-rd staggered row, interchangeable with L4 7.62mm Bren and 20 rd. L1 & C1 magazines
Cyclic fire rate	675 - 750 rpm
Other notes			
	Can be fitted with L1 & C1 bayonet
	Folding bipod for off-hand or on-ground fire
	Over-centre carry handle
	3-position selector, S, R & A

USER GUIDE

for PARTS and VOCABULARY LISTS

IMPORTANT— Read this page first

British, Canadian and Australian lists and relevant armourer's instructions have been referred to in compilation of this section. Compared with WW 2 vintage Identification Lists and Instructions, these lists do not have details such as Part Material or Previous Parts numbers. Additional information and footnote indicators have also been dispensed with. The Remarks column has been deleted for the sake of column space on the different format page.

Parts groups and assemblies nomenclature by line remains indented, to assist armourers in ascertaining whether components belong to sub-assemblies or parts listed on preceding lines. This is now easier to determine by reading the number of leader dots rather than gauging by eye whether the part name is indented a little further than the line or lines above. In the World War 2 period Armourers Lists, upper case text was used to indicate the particular part while lower case text provides the additional description. This has been dispensed with in the more modern lists where all parts and their descriptions are typeset in upper case, *e.g.*

<i>NATO Stock Number</i>	<i>Item Name & Description</i>	<i>Part No. /Drawing</i>	<i>Qty.</i>
1005-99-960-0001	RIFLE, 7.62mm, L1A1, NORMAL BUTT	P3/15440/G/306	1
1005-99-960-0004	. BARREL & BODY ASSEMBLY	P3/14529/M/306	1
1005-99-960-0005	.. BARREL ASSEMBLY	P3/14531/A/306	1
1005-99-960-0006	... BARREL, FITTED	P3/14530/S/306	1
1005-99-960-2006 BARREL	P3/13912/306	1
1005-99-960-2266 BLOCK, GAS	P3/15419/306	1
1005-99-960-2267 PIN, FIXING, GAS BLOCK	P3/13772/306	1
1005-99-960-3106 PIN, RESTRICTING, GAS REGULATOR	P3/15273/306	1
1005-99-960-2272	... REGULATOR, GAS	P3/16523/306	1
1005-99-960-3422	... RING, RETAINING, GAS REGULATOR	P3/13772/306	1
1005-99-960-2006	... SPRING, POSITIONING, GAS REGULATOR	P3/13912/306	1
1005-99-960-2266	... CYLINDER, GAS	P3/13794/306	1
1005-99-960-2267	... PIN, FIXING, GAS CYLINDER	P3/19255/306	1
1005-99-960-2267	... ELIMINATOR, FLASH	CR 1491	1

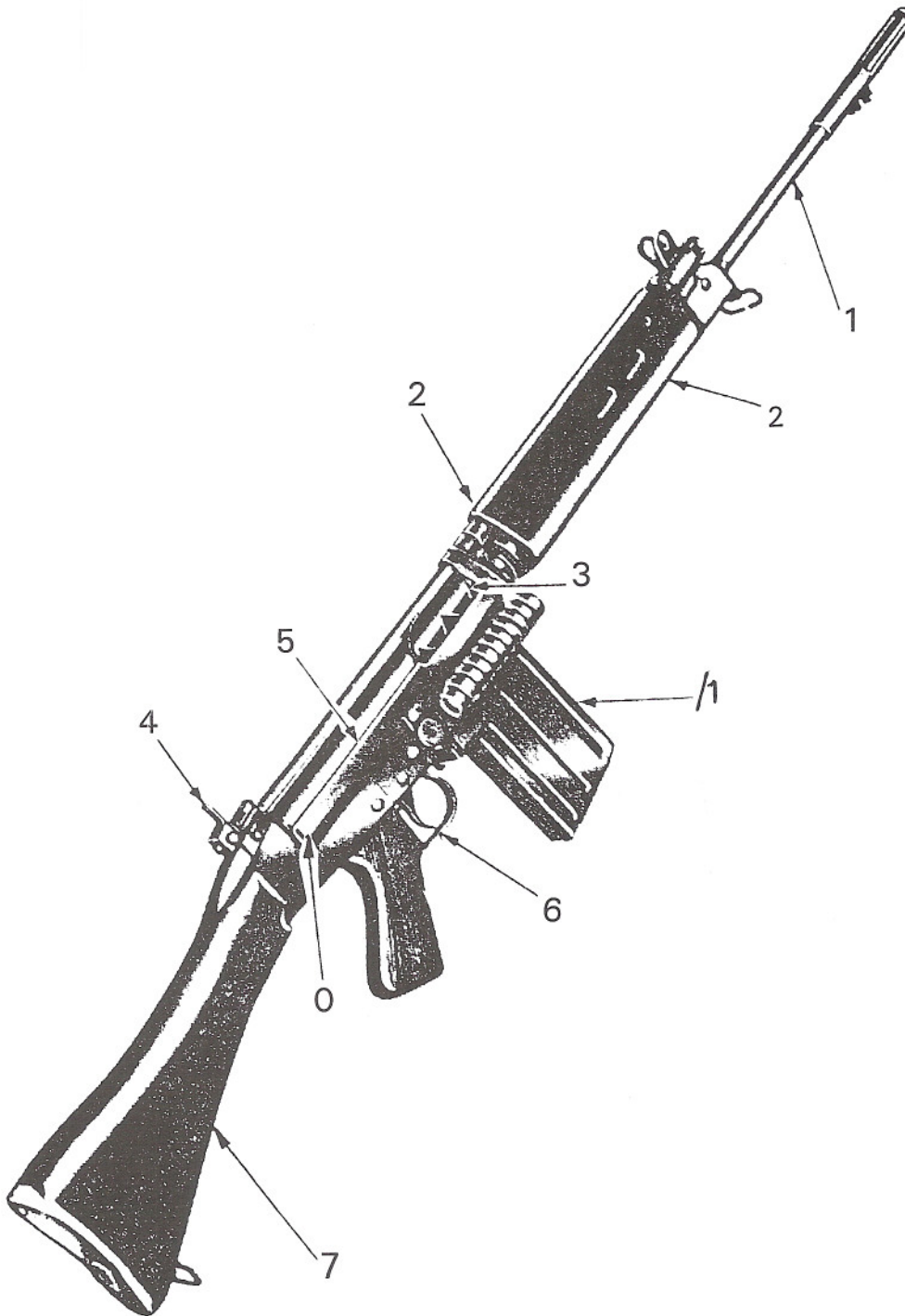
et cetera.

The extract shown above indicates the dot leader used to identify which components are part of larger assemblies and sub-assemblies. 'Rifle, 7.62mm' has no dot leader as it is the primary assembly. '.Barrel & Body' has one dot leader while '. Barrel assembly' has two, which indicates that the Barrel assembly is part of the Barrel & Body which is an assembly on the Rifle.

Parts number prefixes generally commence with P3/ designating the small arms series although hardware items will be noted with non-service numbers such as AGS 2034, BS 4174 or Hoffman RXI. Some older parts nos. will be noted with post-WW2 CR prefix and earlier drawing numbers with DD(E) [Design Department Enfield] are still evident.

The L1A1 served in Vietnam, the Falklands and various police and peace-keeping operations; interchangeability of parts among L1 and C1 users was a feature of allied operations. NATO armed forces equipment compatibility was a prime feature of L1 planning and production.

Key Plate



RIFLE, 7.62^{mm}, L1A1 [B1/1005-99-960-0001]
including
ACCESSORIES / ANCILLARIES
and
CONVERSION KIT, 7.62mm RIFLE
.22 inch CALIBRE, L12A1 [B2/6920-12-147-6954]

PLATES—

<i>Fig.</i>	<i>Group</i>	<i>page</i>
0.	Body Assembly	16
1.	Barrel Assembly	18
2.	Handguards & Carry Handle	20
3.	Breech Block & Carrier	22
4.	Safety Sear & Backsight	24
5.	Trigger Mechanism & Cover	26
6.	Trigger Mechanism	28
7.	Butt Assembly	30
/1.	Accessories & Ancillaries	32
/2.	Blank-fire Attachment	36
/3.	Conversion Unit	38
/4.	Trilux Sightunit	40

These Identification Lists are of British origin, circa late 1970's - early 1980's. This probably represents the widest range of L1A1 component parts and ancillaries over some thirty years of service on an international basis. Contemporary Canadian and Australian parts listings are not as broad-based and also do not represent the wider issue scales of the British equipment. For this reason, the British lists have been chosen to more widely represent the L1 /C1 series of inch-F.A.L. rifles for the purpose of this Identification List section.

Subsequent annotation to the British lists have been made on some of the parts list pages, with reference to contemporary Australian and Canadian manuals.

Body Assembly

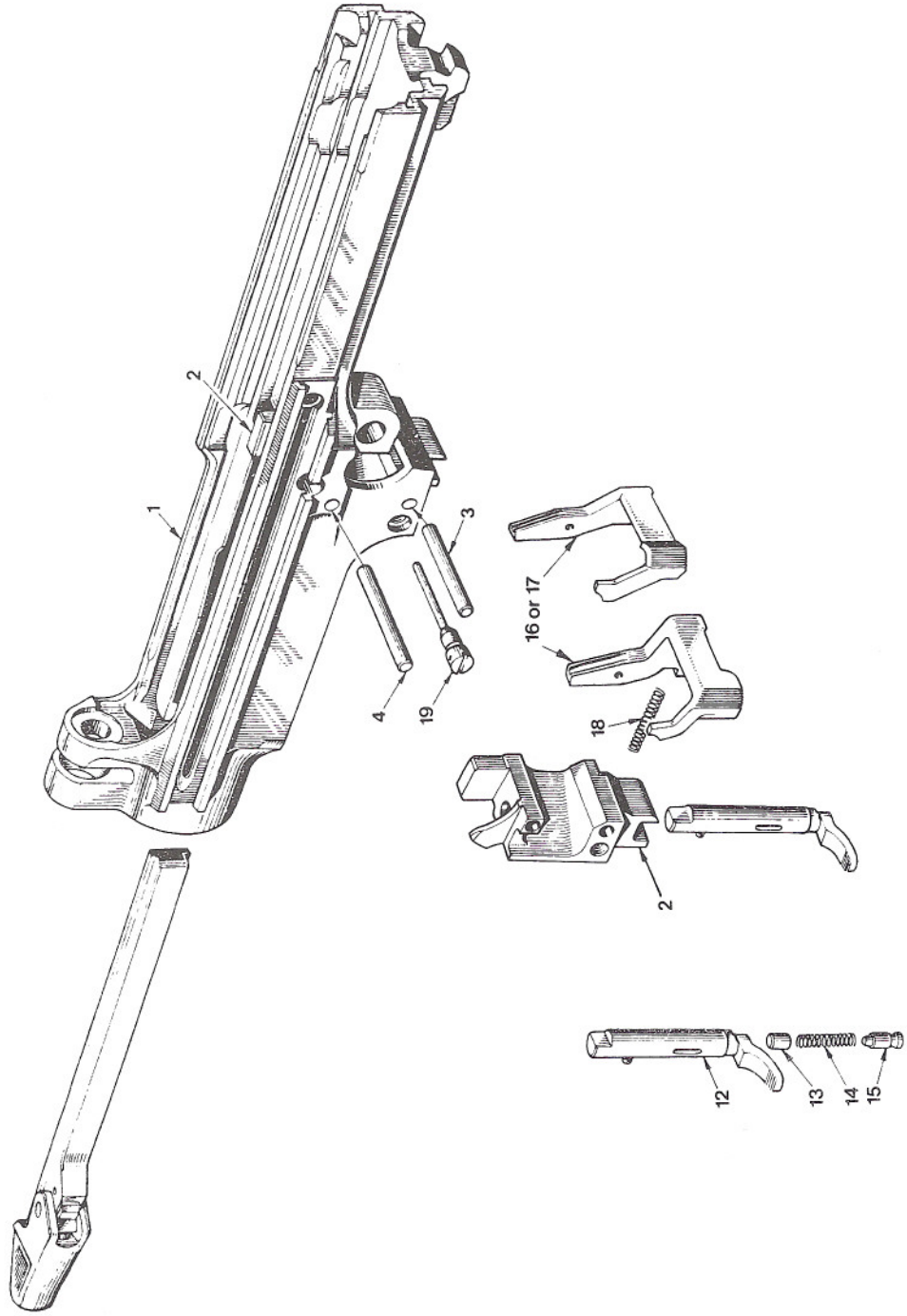
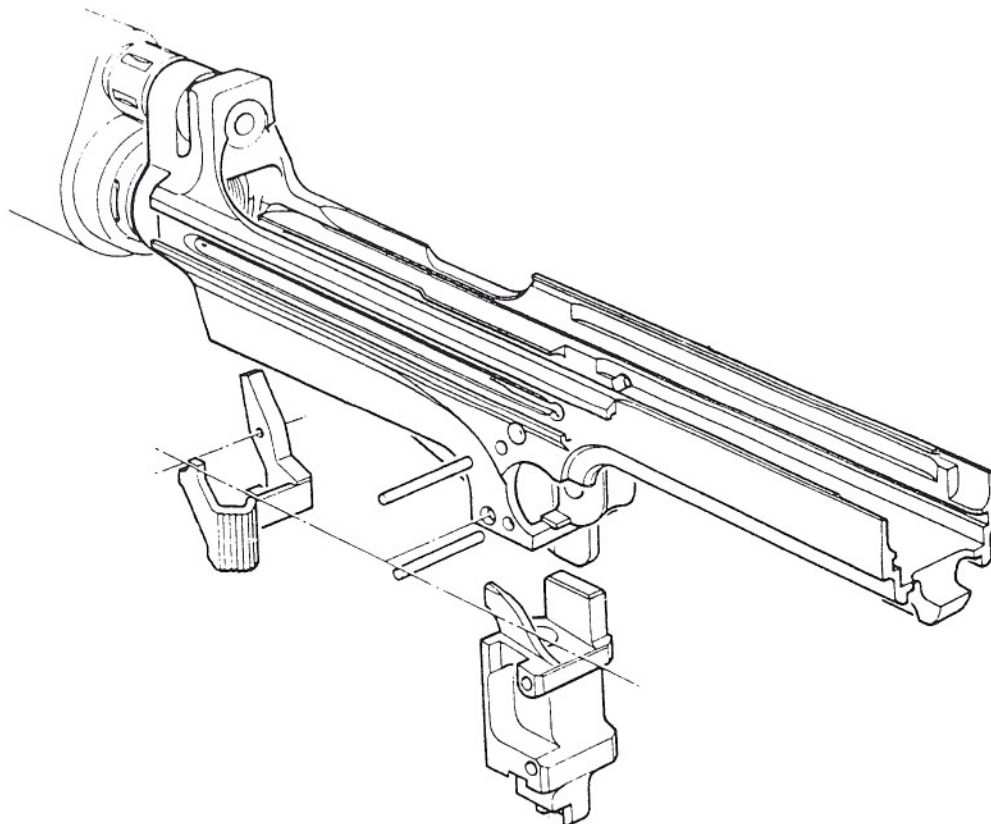


Fig. Item	Man Code Navy - N Army - A RAF - R	NATO Stock No.	Item Name & Description	Part No. / Drawing No.	No. off	Note
0-0			RIFLE, 7.62MM, L1A1 (contd)			
			.BARREL AND BODY ASSEMBLY (contd)			
			..BARREL ASSEMBLY (contd)			
1-4	A B1	1005-99-960-0007	..BODY ASSEMBLY	P3/13729/306	1	
1	A B1	1005-99-960-2007	...BODY	P3/13788/306	1	
2	A B1	1005-99-960-2289	...EJECTOR CARTRIDGE	P3/13789/306	1	
3	A B1	1005-99-960-2290	...PIN, EJECTOR, LOWER	P3/13791/306	1	
4	A B1	1005-99-960-2291	...PIN, EJECTOR, UPPER	P3/13792/306	1	
12	A B1	1005-99-960-3087	BREECH BLOCK	306	1	
			...CATCH	P3/18775/A/306	1	
13	A B1	1005-99-960-2296	...PLUNGER	P3/13819/306	1	
14	A B1	1005-99-960-2245	...SPRING, CATCH, PLUNGER	P3/13820/306	1	
15	A B1	1005-99-960-3088	...PLUG CATCH	P3/18777/306	1	
16	A B1	1005-99-960-2297	..CATCH, MAGAZINE	P3/16259/306	1	
			OR			
17	A B1	1005-99-960-2494	..CATCH, MAGAZINE	P3/17188/306	1	
18	A B1	1005-99-960-2102	..SPRING, MAGAZINE CATCH	P3/15416/306	1	
19	A B1	1005-99-960-2309	..SCREW, AXIS, MAGAZINE CATCH	P3/16260/306	1	



Body assembly— The body is often referred to as the 'upper', the primary part of the rifle action which carries the registered (serial) number, as is the case with many L1 and C1 contemporaries. The trigger group housing is often referred to as the 'lower' and houses the trigger mechanism with attached bolt reciprocating spring, plunger and buttstock assembly. A full listing of Australia's Lithgow L1A1 and L2A1 serial numbers and dispersion will be found in 'S.L.R. - Australia's F.N. F.A.L.'

Barrel Assembly

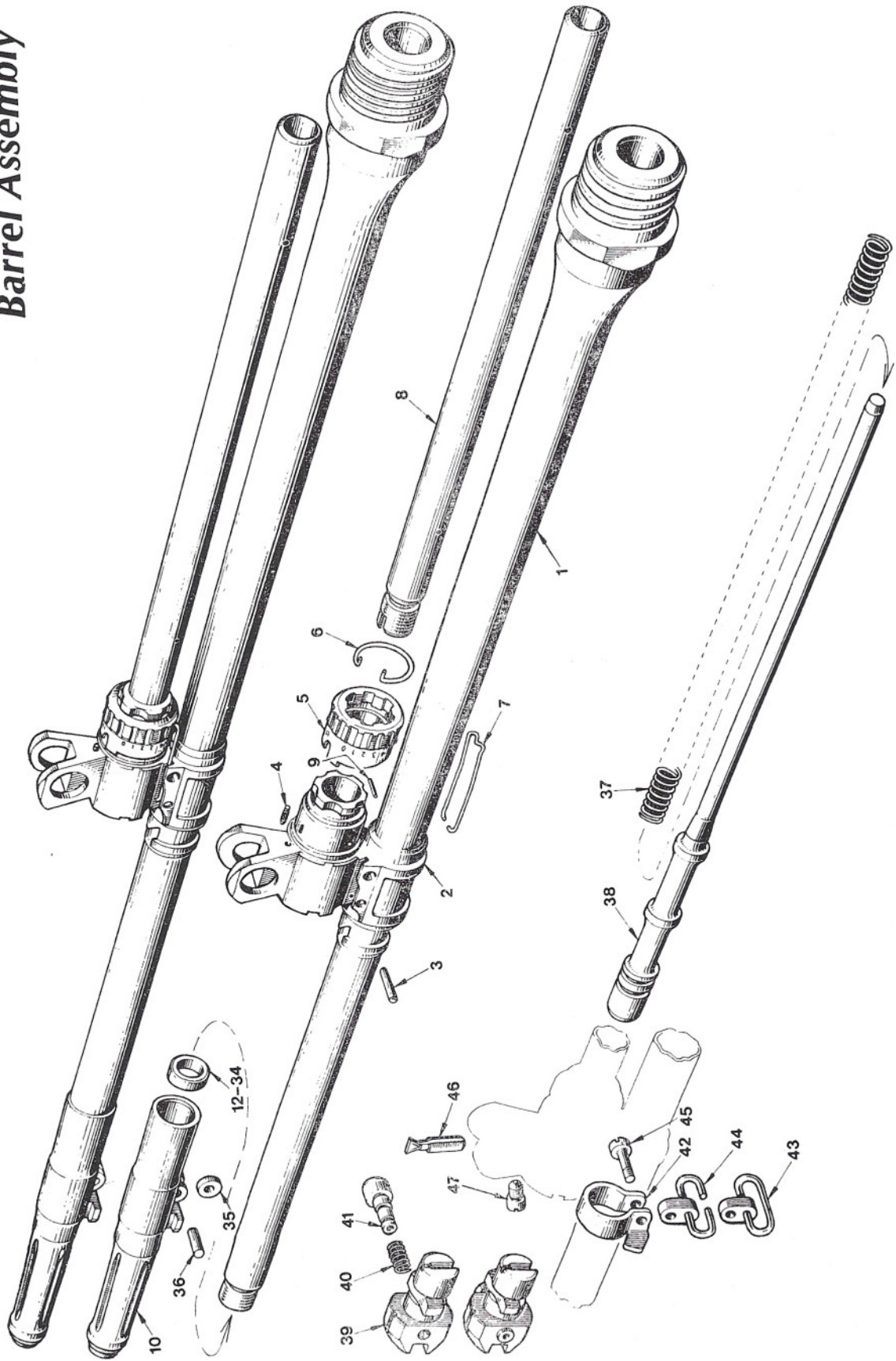


Fig. Item	Man Code Navy - N Army - A RAF - R	NATO Stock No.	Item Name & Description	Part No. / Drawing No.	No. off	Note
1-0	A B1	1005-99-960-0001	RIFLE, 7.62MM, L1A1, normal butt	P3/15440/G/ 306	1	
1-45	A B1	1005-99-960-0004	..BARREL AND BODY ASSEMBLY	P3/14529/M/ 306	1	
1-36	A B1	1005-99-960-0005	..BARREL ASSEMBLY	P3/14531/A/ 306	1	
1-4	A B1	1005-99-960-0006	...BARREL, FITTED	P3/14530/S/ 306	1	
1	A B1	1005-99-960-2006BARREL	P3/13912/306	1	
2	A B1	1005-99-960-2266BLOCK, GAS	P3/15419/306	1	
3	A B1	1005-99-960-2267PIN, FIXING, GAS BLOCK	P3/13772/306	1	
4	A B1	1005-99-960-2268PIN, RESTRICTING, GAS REGULATOR	P3/15272/306	1	
5	A B1	1005-99-960-2274	...REGULATOR, GAS	P3/16523/306	1	
6	A B1	1005-99-960-2275	...RING, RETAINING, GAS REGULATOR	P3/15414/306	1	
7	A B1	1005-99-960-2276	...SPRING, POSITIONING, GAS REGULATOR	P3/13794/306	1	
8	A B1	1005-99-960-3106	...CYLINDER, GAS	P3/19255/306	1	
9	A B1	1005-99-960-2272	...PIN, FIXING, GAS CYLINDER			
10	A B1	1005-99-963-3422	...ELIMINATOR, FLASH	CR 1491	1	
			OR			
NI11	A B1	1005-99-960-2270	...ELIMINATOR, FLASH	P3/14528/306	1	
12	A B1	1005-99-960-2277	...WASHER, POSITIONING, no. 1	P3/15273/306	1	
13	A B1	1005-99-960-3118	...WASHER, POSITIONING, no. 1A	P3/15273/306	1	
14	A B1	1005-99-960-2278	...WASHER, POSITIONING, no. 2	P3/15273/306	1	
15	A B1	1005-99-960-3119	...WASHER, POSITIONING, no. 2A	P3/15273/306	1	
16	A B1	1005-99-960-2279	...WASHER, POSITIONING, no. 3	P3/15273/306	1	
17	A B1	1005-99-960-3120	...WASHER, POSITIONING, no. 3A	P3/15273/306	1	
18	A B1	1005-99-960-2280	...WASHER, POSITIONING, no. 4	P3/15273/306	1	
19	A B1	1005-99-960-3121	...WASHER, POSITIONING, no. 4A	P3/15273/306	1	
20	A B1	1005-99-960-2281	...WASHER, POSITIONING, no. 5	P3/15273/306	1	
21	A B1	1005-99-960-3122	...WASHER, POSITIONING, no. 5A	P3/15273/306	1	
22	A B1	1005-99-960-2282	...WASHER, POSITIONING, no. 6	P3/15273/306	1	
23	A B1	1005-99-960-3123	...WASHER, POSITIONING, no. 6A	P3/15273/306	1	
24	A B1	1005-99-960-2283	...WASHER, POSITIONING, no. 7	P3/15273/306	1	
25	A B1	1005-99-960-3124	...WASHER, POSITIONING, no. 7A	P3/15273/306	1	
26	A B1	1005-99-960-2284	...WASHER, POSITIONING, no. 8	P3/15273/306	1	
27	A B1	1005-99-960-3125	...WASHER, POSITIONING, no. 8A	P3/15273/306	1	
28	A B1	1005-99-960-2285	...WASHER, POSITIONING, no. 9	P3/15273/306	1	
29	A B1	1005-99-960-3126	...WASHER, POSITIONING, no. 9A	P3/15273/306	1	
30	A B1	1005-99-960-2286	...WASHER, POSITIONING, no. 10	P3/15273/306	1	
31	A B1	1005-99-960-3127	...WASHER, POSITIONING, no. 10A	P3/15273/306	1	
32	A B1	1005-99-960-2287	...WASHER, POSITIONING, no. 11	P3/15273/306	1	
33	A B1	1005-99-960-3128	...WASHER, POSITIONING, no. 11A	P3/15273/306	1	
34	A B1	1005-99-960-2288	...WASHER, POSITIONING, no. 12	P3/15273/306	1	
35	A B1	1005-99-960-2271	...KEY, RETAINING, FLASH ELIMINATOR	P3/15274/306	1	
36	A B1	1005-99-960-2273	...PIN, RETAINING, FLASH ELIMINATOR			
			KEY	P3/15261/306	1	
37	A B1	1005-99-960-2103	..SPRING, PISTON	P3/13783/306	1	
38	A B1	1005-99-960-2305	..PISTON	P3/13782/306	1	
39-41	A B1	1005-99-960-0055	..PLUG ASSEMBLY, GAS CYLINDER	P3/13727/S/ 306	1	
39	A B1	1005-99-960-2306	...PLUG, GAS CYLINDER	P3/16752/306	1	
40	A B1	1005-99-960-2100	...SPRING, PLUG, PLUNGER	P3/13781/306	1	
41	A B1	1005-99-960-2307	...PLUNGER, PLUG	P3/13780/306	1	
42	A B1	1005-99-960-3098	..BAND, FRONT SLING HOOP	P3/18968/306	1	
43	A B1	1005-99-960-2304	..LOOP, SLING, FRONT	P3/13735/306	1	
			OR			
44	A B1	1005-99-960-2495	..LOOP, SLING, FRONT	P3/17191/306	1	
45	A B1	5305-99-960-2310	..SCREW, MACHINE, UNF, steel, no. 8 x 19/32in. lg	P3/13778/306	1	
46	A B1	1005-99-960-2014	..FORESIGHT	P3/16493/306	1	
47	A B1	1005-99-960-2016	..SCREW, SECURING, FORESIGHT	P3/16494/306	1	

Items 12-34 fit as required

Handguards & Carry Handle

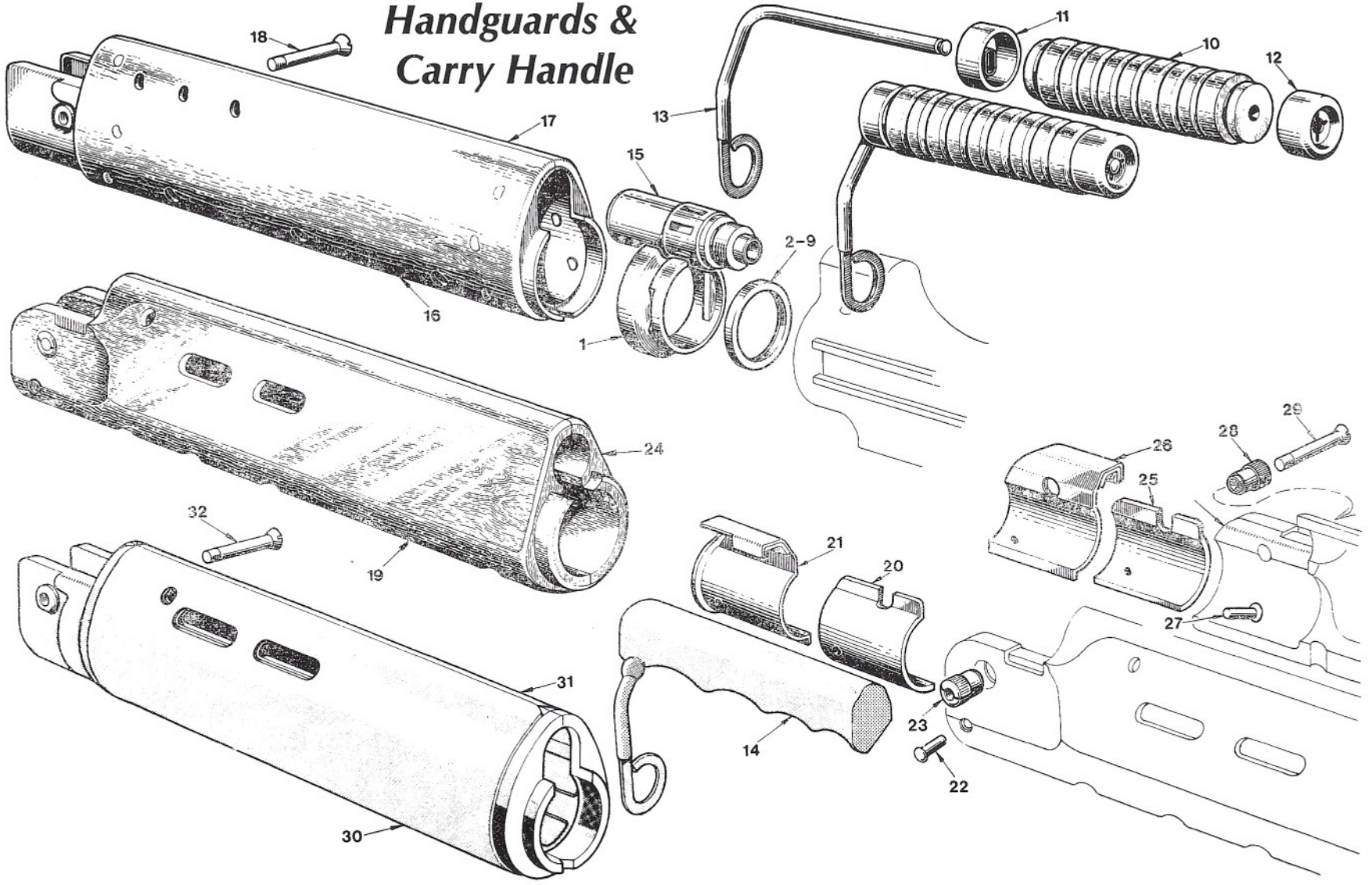


Fig. Item	Man Code Navy - N Army - A RAF - R	NATO Stock No.	Item Name & Description	Part No. / Drawing No.	No. off	Note
2-0			RIFLE, 7.62MM, L1A1 (contd) ..BARREL AND BODY ASSEMBLY (contd)			
1	A	B1	1005-99-960-2308 ..RING, RETAINING, HANDGUARDS	P3/13807/306	1	
2	A	B1	1005-99-960-2312 ..WASHER, BREECHING, no.1	P3/13913/306	1	
3	A	B1	1005-99-960-2313 ..WASHER, BREECHING, no.2	P3/13913/306	1	
4	A	B1	1005-99-960-2314 ..WASHER, BREECHING, no.3	P3/13913/306	1	
5	A	B1	1005-99-960-2315 ..WASHER, BREECHING, no.4	P3/13913/306	1	
6	A	B1	1005-99-960-2316 ..WASHER, BREECHING, no.5	P3/13913/306	1	
7	A	B1	1005-99-960-2317 ..WASHER, BREECHING, no.6	P3/13913/306	1	
8	A	B1	1005-99-960-2318 ..WASHER, BREECHING, no.7	P3/13913/306	1	
9	A	B1	1005-99-960-2319 ..WASHER, BREECHING, no.8	P3/13913/306	1	
10-13	A	B1	1005-99-960-0255 ..HANDLE, CARRYING, ASSEMBLY	P3/18185/S/ 306	1	
10-12	A	B1	1005-99-960-0256 ...HANDLE, ASSEMBLY	P3/18184/306	1	
10	A	B1	1005-99-960-3060 ...HANDLE	P3/18183/306	1	
11	A	B1	1005-99-960-3061 ...FERRULE	P3/17881/306	1	
12	A	B1	1005-99-960-2008FERRULE	P3/14688/306	1	
13	A	B1	1005-99-960-2010 ...STEM, CARRYING HANDLE	P3/14689/306	1	
			OR			
14	A	B1	1005-99-963-2038 ..HANDLE, CARRYING	CR 14356/306	1	
15	A	B1	1005-99-960-3109 ..SCREW, RETAINING, CARRYING HANDLE	P3/19260/306	1	
16	A	B1	1005-99-960-0269 ..GUARD, HAND ASSEMBLY, LEFT	P3/18293/306	1	
17	A	B1	1005-99-960-3129 ..GUARD, HAND ASSEMBLY, RIGHT	P3/18292/306	1	
18	A	B1	1005-99-960-3134 ..SCREW, HANDGUARD	P3/19760/306	1	
			OR			
19-23	A	B1	1005-99-960-0102 ..GUARD ASSEMBLY, HAND, LEFT	P3/19256/306	1	
19		NP	...GUARD, HAND, LEFT	P3/19258/306	1	
20	A	B1	1005-99-960-2091 ...INSULATOR, LEFT LINER	P3/13803/306	1	
21	A	B1	1005-99-960-2092 ...LINER, LEFT HANDGUARD	P3/13804/306	1	
22	A	B1	1005-99-960-2094 ...RIVET, LINER	P3/13801/306	1	
23	A	B1	1005-99-960-2093 ...NUT, HANDGUARD SCREW	P3/13806/306	1	
24-28	A	B1	1005-99-960-0103 ..GUARD ASSEMBLY, HAND, RIGHT	P3/19257/306	1	
24		NP	...GUARD, HAND, RIGHT	P3/19259/306	1	
25	A	B1	1005-99-960-2096 ...INSULATOR, RIGHT LINER	P3/13796/306	1	
26	A	B1	1005-99-960-2097 ...LINER, RIGHT HANDGUARD	P3/13797/306	1	
27	A	B1	1005-99-960-2094 ...RIVET, LINER	P3/13801/306	1	
28	A	B1	1005-99-960-2098 ...SLEEVE, HANDGUARD	P3/13800/306	1	
29	A	B1	1005-99-960-3134 ..SCREW, HANDGUARD	P3/19760/306	1	
			OR			
30	A	B1	1005-99-961-6973 ..GUARD ASSEMBLY, HAND, LEFT, plastics type handguard	DD(E)23555/ 306	1	
31	A	B1	1005-99-961-6972 ..GUARD ASSEMBLY, HAND, RIGHT, plastics type handguard	DD(E)23558/ 306	1	
32	A	B1	1005-99-960-3134 ..SCREW, HANDGUARD	P3/19760/306	1	

Items 2-9 to be fitted as required

Breech Block & Carrier

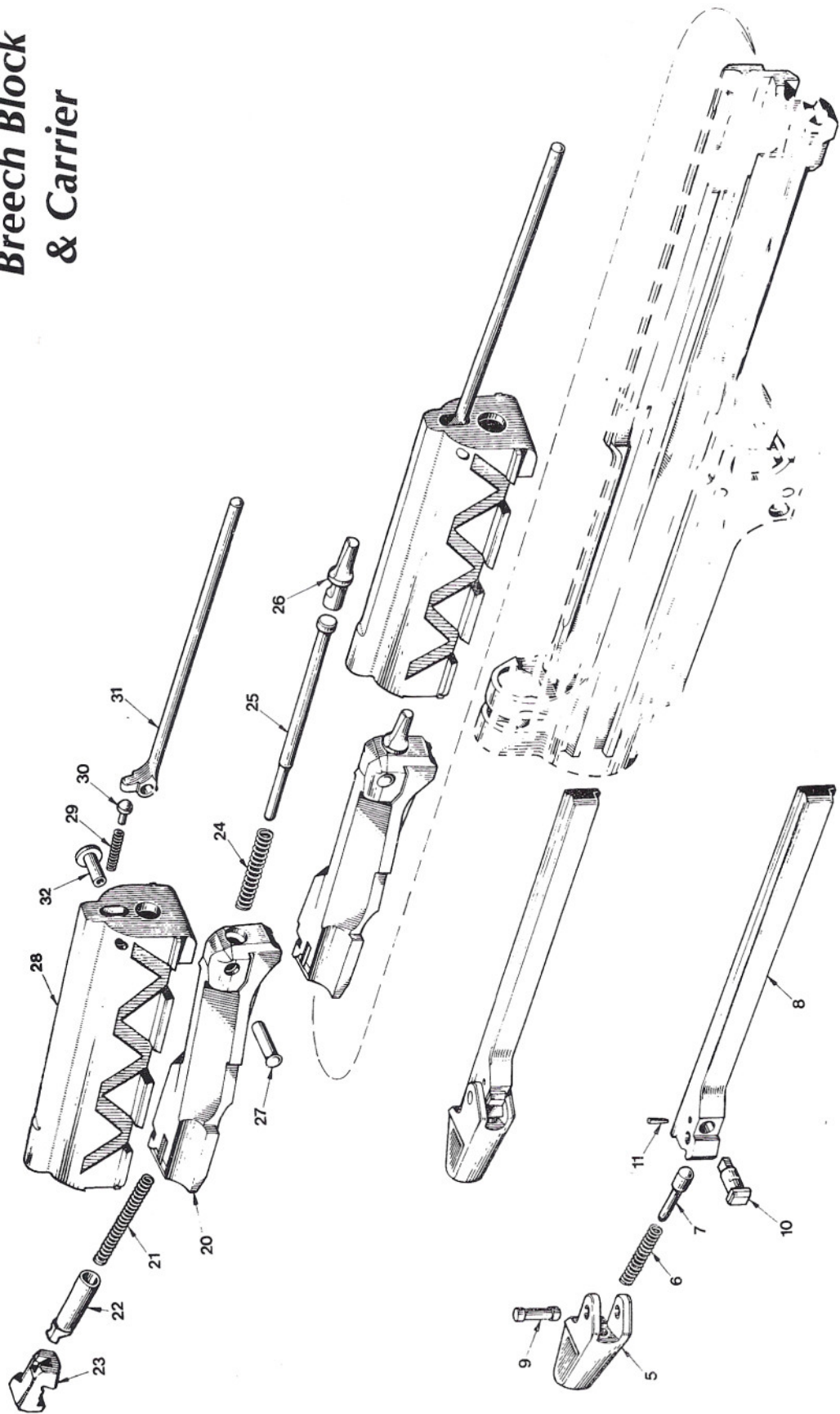
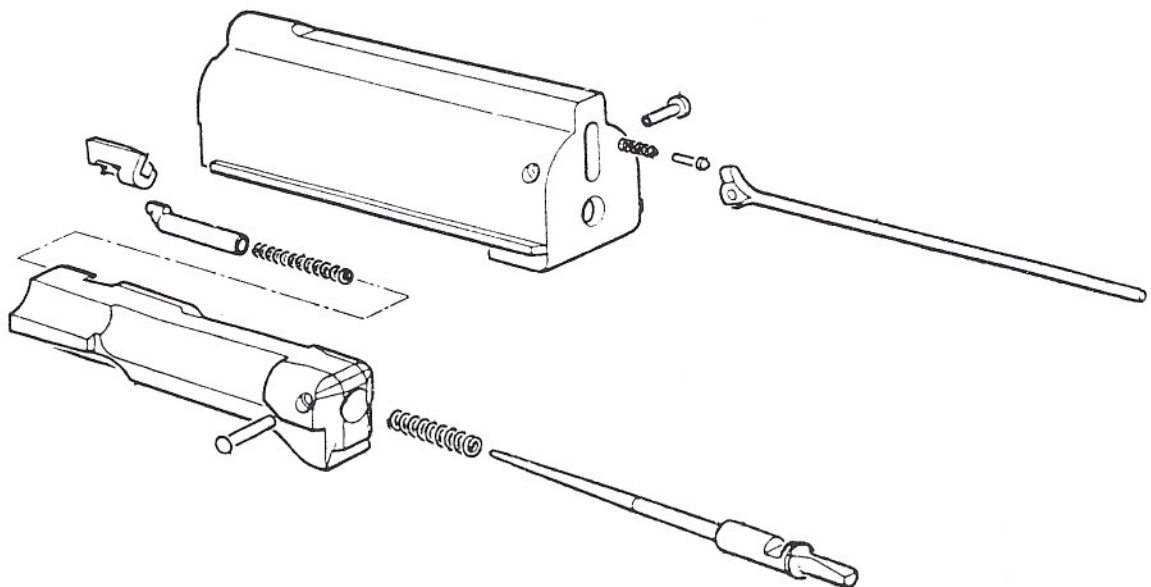


Fig. Item	Man Code Navy - N Army - A RAF - R		NATO Stock No.	Item Name & Description	Part No. / Drawing No.	No. off	Note
3-0				RIFLE, 7.62MM, L1A1 (contd)			
				..BARREL AND BODY ASSEMBLY (contd)			
				..BARREL ASSEMBLY (contd)			
1-4	A	B1	1005-99-960-0007	..BODY ASSEMBLY	P3/13729/306	1	
5-11	A	B1	1005-99-960-0054	..HANDLE ASSEMBLY, COCKING	P3/15417/S/ 306	1	
5	A	B1	1005-99-960-2298	...CATCH, COCKING HANDLE	P3/15418/306	1	
6	A	B1	1005-99-960-2099	...SPRING	P3/13868/306	1	
7	A	B1	1005-99-960-3057	...PLUNGER, COCKING HANDLE	P3/17923/306	1	
8	A	B1	1005-99-960-2302	...SLIDE, COCKING HANDLE	P3/13755/306	1	
9	A	B1	1005-99-960-2300	...PIN, COCKING HANDLE	P3/15264/306	1	
10	A	B1	1005-99-960-2303	...STUD, COCKING HANDLE	P3/15263/306	1	
11	A	B1	1005-99-960-2299	...PIN, COCKING HANDLE STUD	P3/13810/306	1	
12-15	A	B1	1005-99-960-0274	..CATCH ASSEMBLY, HOLDING OPEN,	P3/18776/A/		
20-27	A	B1	1005-99-960-0105	..BLOCK ASSEMBLY, BREECH	P3/19726/S/ 306	1	
20	A	B1	1005-99-960-2104	..BLOCK, BREECH	P3/16255/306	1	
21	A	B1	1005-99-960-2105	..SPRING, EXTRACTOR	P3/16258/306	1	
22	A	B1	1005-99-960-2323	..PLUNGER, EXTRACTOR	P3/16257/306	1	
23	A	B1	1005-99-960-2320	..EXTRACTOR, CARTRIDGE	P3/16256/306	1	
24	A	B1	1005-99-960-3117	..SPRING, FIRING PIN	P3/19675/306	1	
25	A	B1	1005-99-960-3116	..PIN, FIRING	P3/19674/306	1	
26	A	B1	1005-99-960-3115	..HEAD, FIRING PIN	P3/19677/306	1	
27	A	B1	1005-99-960-2322	..PIN, RETAINING, FIRING PIN	P3/13827/306	1	
28-32	A	B1	1005-99-960-0057	..CARRIER ASSEMBLY, BREECH BLOCK	P3/13738/S/ 306	1	
28	A	B1	1005-99-960-2107	..CARRIER, BREECH BLOCK	P3/13833/306	1	
29	A	B1	1005-99-960-2108	..SPRING, ROD, PLUNGER	P3/13834/306	1	
30	A	B1	1005-99-960-2325	..PLUNGER, ROD	P3/13831/306	1	
31	A	B1	1005-99-960-2326	..ROD, COMPRESSING, RETURN SPRING	P3/13832/306	1	
32	A	B1	1005-99-960-2324	..PIN, AXIS, ROD	P3/13830/306	1	



Canadian C1 carriers do not have sand-cuts like their British and Australian counterparts. Rifle serial numbers were engraved onto the breech blocks and breech-block carriers. The form of this marking may be found to vary considerably depending upon the country of manufacture, any FTR or the time frame.

Safety Sear & Backsight

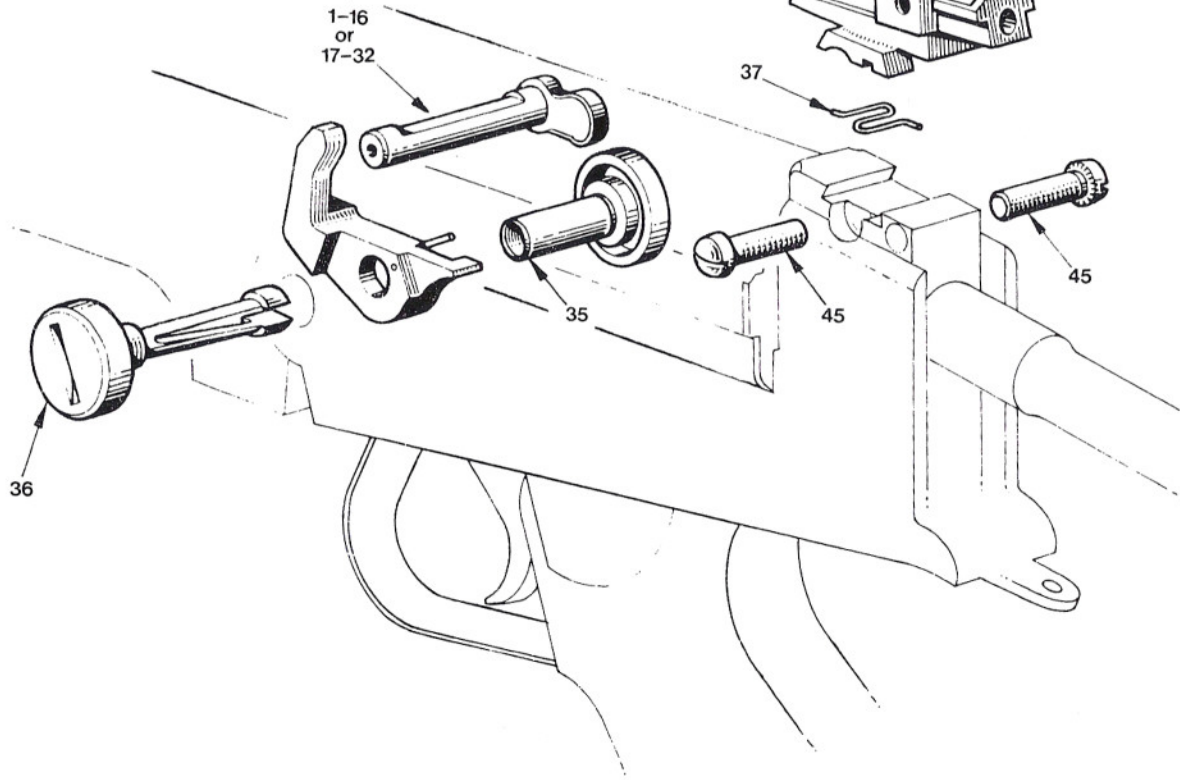
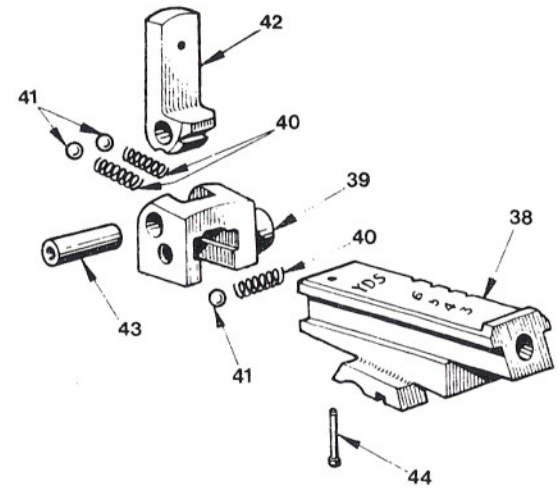
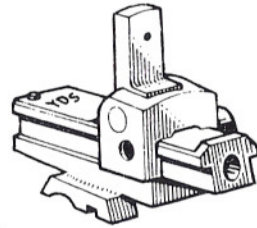
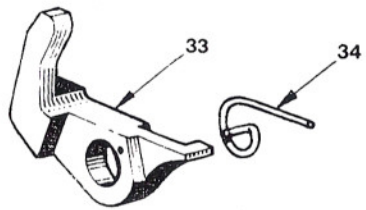


Fig. Item	Man Code Navy - N Army - A RAF - R	NATO Stock No.	Item Name & Description	Part No. / Drawing No.	No. off	Note	
4-0			RIFLE, 7.62MM, L1A1 (Contd)				
1	A B1	1005-99-960-2292	.SHOULDER, LOCKING, 03	P3/13907/306	1	Shoulder, locking - Subsequent oversize replacement shoulders are marked for the number of times refitted using symbols "A", "B", "C" or numbers. See 'S.L.R. Australia's F.N. FAL' page 99.	
2	A B1	1005-99-960-2078	.SHOULDER, LOCKING, 02	P3/13907/306	1		
3	A B1	1005-99-960-2077	.SHOULDER, LOCKING, 01	P3/13907/306	1		
4	A B1	1005-99-960-2076	.SHOULDER, LOCKING, 0	P3/13907/306	1		
5	A B1	1005-99-960-2070	.SHOULDER, LOCKING, 1	P3/13907/306	1		
6	A B1	1005-99-960-2071	.SHOULDER, LOCKING, 2	P3/13907/306	1		
7	A B1	1005-99-960-2072	.SHOULDER, LOCKING, 3	P3/13907/306	1		
8	A B1	1005-99-960-2073	.SHOULDER, LOCKING, 4	P3/13907/306	1		
9	A B1	1005-99-960-2074	.SHOULDER, LOCKING, 5	P3/13907/306	1		
10	A B1	1005-99-960-2075	.SHOULDER, LOCKING, 6	P3/13907/306	1		
11	A B1	1005-99-960-2458	.SHOULDER, LOCKING, 7	P3/13907/306	1		
12	A B1	1005-99-960-2459	.SHOULDER, LOCKING, 8	P3/13907/306	1		
13	A B1	1005-99-960-2460	.SHOULDER, LOCKING, 9	P3/13907/306	1		
14	A B1	1005-99-960-2461	.SHOULDER, LOCKING, 10	P3/13907/306	1		
15	A B1	1005-99-960-2462	.SHOULDER, LOCKING, 11	P3/13907/306	1		
16	A B1	1005-99-960-2463	.SHOULDER, LOCKING, 12	P3/13907/306	1		
			OR				
17	A B1	1005-99-963-2441	.SHOULDER, LOCKING, 02Y	CR 1483	1		
18	A B1	1005-99-963-2442	.SHOULDER, LOCKING, 01Y	CR 1483	1		
19	A B1	1005-99-963-2443	.SHOULDER, LOCKING, 0Y	CR 1483	1		
20	A B1	1005-99-963-2444	.SHOULDER, LOCKING, 1Y	CR 1483	1		
21	A B1	1005-99-963-2445	.SHOULDER, LOCKING, 2Y	CR 1483	1		
22	A B1	1005-99-963-2446	.SHOULDER, LOCKING, 3Y	CR 1483	1		
23	A B1	1005-99-963-2447	.SHOULDER, LOCKING, 4Y	CR 1483	1		
24	A B1	1005-99-963-2448	.SHOULDER, LOCKING, 5Y	CR 1483	1		
25	A B1	1005-99-963-2449	.SHOULDER, LOCKING, 6Y	CR 1483	1		
26	A B1	1005-99-963-2450	.SHOULDER, LOCKING, 7Y	CR 1483	1		
27	A B1	1005-99-963-2451	.SHOULDER, LOCKING, 8Y	CR 1483	1		
28	A B1	1005-99-963-2452	.SHOULDER, LOCKING, 9Y	CR 1483	1		
29	A B1	1005-99-963-2453	.SHOULDER, LOCKING, 10Y	CR 1483	1		
30	A B1	1005-99-963-2454	.SHOULDER, LOCKING, 11Y	CR 1483	1		
31	A B1	1005-99-963-2455	.SHOULDER, LOCKING, 12Y	CR 1483	1		
32	A B1	1005-99-963-2456	.SHOULDER, LOCKING, 03Y	CR 1483	1		
33-34	A B1	1005-99-960-0070	.SEAR, SAFETY	P3/13739/S/ 306	1		
33	A B1	1005-99-960-2365	..SEAR, SAFETY	P3/13835/ 306	1		
34	A B1	1005-99-960-2366	..SPRING, SAFETY SEAR	P3/13836/ 306	1		
35	A B1	1005-99-960-2363	.PIN, HINGE	P3/13906/ 306	1		
36	A B1	1005-99-960-2364	.PIN, LOCKING, HINGE PIN	P3/13908/ 306	1		
37	A B1	1005-99-960-2015	.PIN, LOCK	P3/13856/ 306	1		
38-44	A B1	1005-99-960-0003	.BACKSIGHT ASSEMBLY	P3/15428/S/ 306	1		
38	A B1	1005-99-960-2003	..RAMP, BACKSIGHT	P3/15426/ 306	1		
39	A B1	1005-99-960-2004	..SLIDE, BACKSIGHT	P3/15425/ 306	1		
40	A B1	1005-99-960-2005	..SPRING, LEAF	P3/15303/ 306	3		
41	A LVC/MT7	3110-99-101-1822	..BALL BEARING, steel, 1/8in. dia	Hoffmann	3		
42	A B1	1005-99-960-2000	..LEAF, BACKSIGHT	P3/15300/ 306	1		
43	A B1	1005-99-960-2001	..PIN, LEAF	P3/15427/ 306	1		
44	A B1	1005-99-960-2002	..PIN, STOP	P3/13909/ 306	1		
45	A B1	1005-99-960-2023	..SCREW, ZEROING, BACKSIGHT, UNF, steel, fil hd, slot drive, phos, no.8 x 5/8in. lg	P3/13850/ 306	2		

* Items 17-32 to be used only with Body Assembly stamped "Y"

Trigger Mechanism & Cover

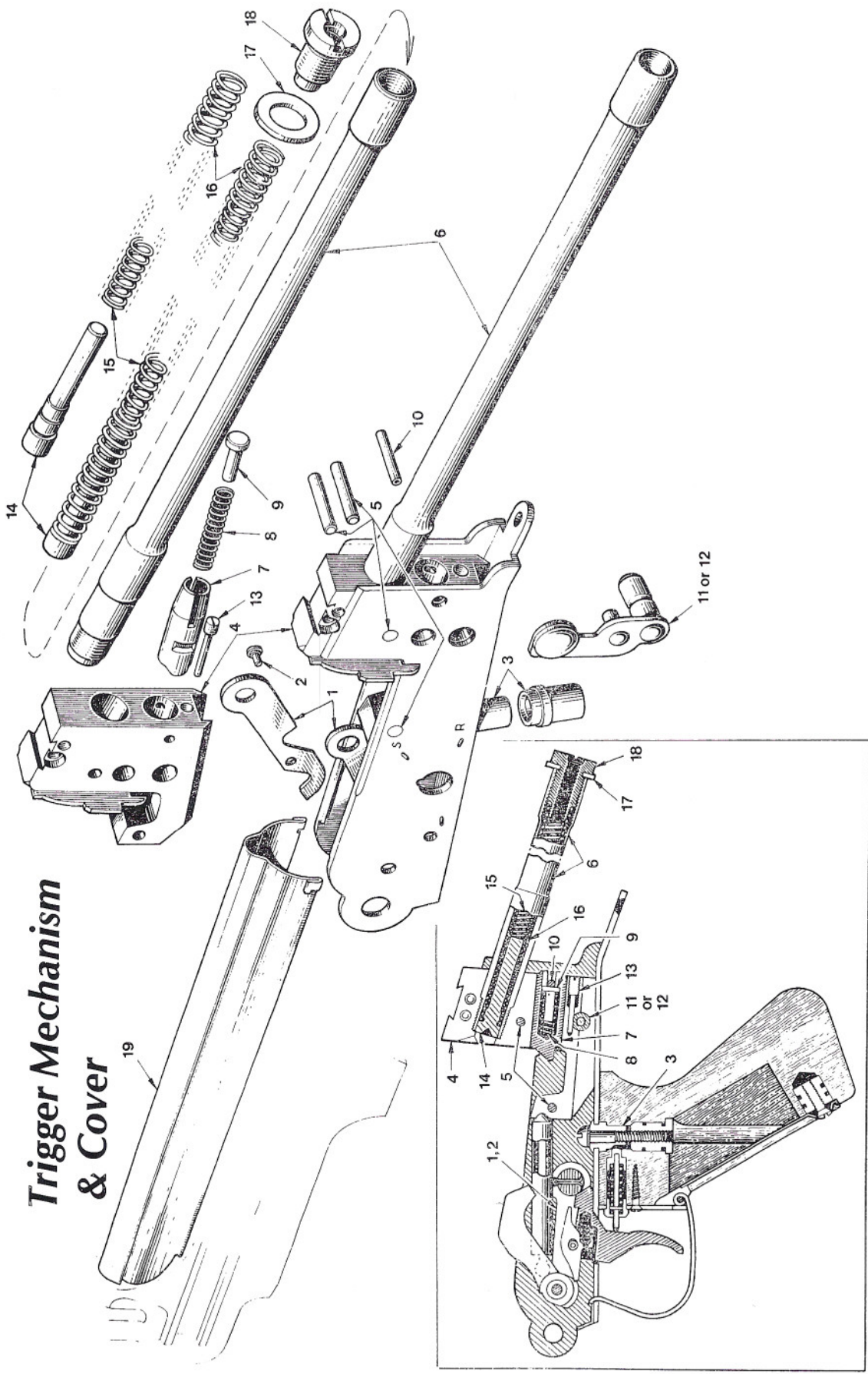
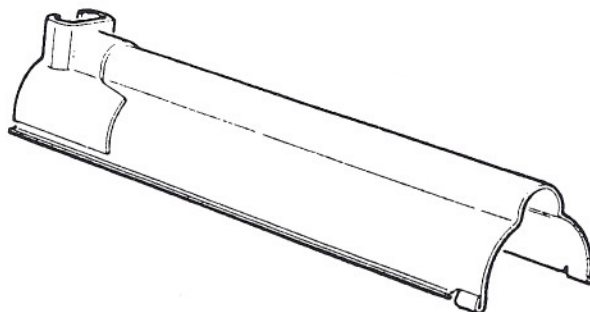
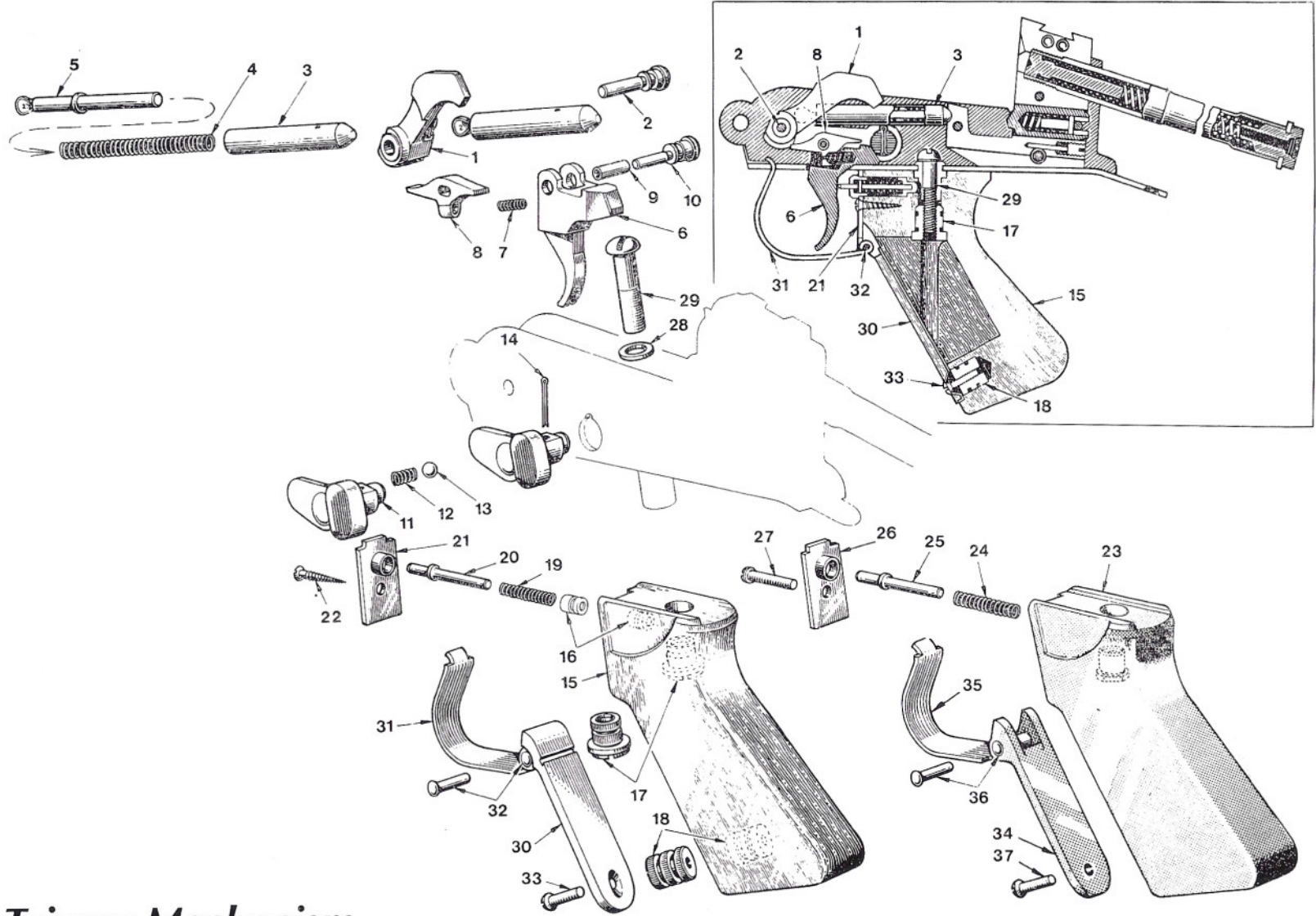


Fig. Item	Man Code Navy - N Army - A RAF - R	NATO Stock No.	Item Name & Description	Part No. / Drawing No.	No. off	Note
5-0			RIFLE, 7.62MM, L1A1 (contd)			
1-18	A	B1	1005-99-960-0009 ..MECHANISM, TRIGGER	P3/15435/306	1	
1-6	A	B1	1005-99-960-0071 ..HOUSING ASSEMBLY, TRIGGER MECHANISM	P3/14527/306	1	
1	A	B1	1005-99-960-2341 ...PLATE, LOCKING	P3/13842/306	1	
2	A	B1	1005-99-960-2343 ...RIVET, AXIS, LOCKING PLATE	P3/13841/306	1	
3	A	B1	1005-99-960-2344 ...SLEEVE, PISTOL GRIP	P3/15268/306	1	
4	A	B1	1005-99-960-2338 ...BLOCK, HOUSING	P3/15266/306	1	
5	A	B1	1005-99-960-2342 ...PIN, HOUSING BLOCK	P3/13845/306	2	
6	A	B1	1005-99-960-2345 ...TUBE, RETURN SPRING	P3/13849/306	1	
7	A	B1	1005-99-960-2327 ..CATCH, LOCKING BODY	P3/13858/306	1	
8	A	B1	1005-99-960-2115 ..SPRING, LOCKING, CATCH	P3/13857/306	1	
9	A	B1	1005-99-960-2361 ..STAY, LOCKING, CATCH SPRING	P3/13879/306	1	
10	A	B1	1005-99-960-2350 ..PIN, RETAINING, LOCKING CATCH	P3/15271/306	1	
11	A	B1	1005-99-960-3069 ..LEVER, LOCKING, CATCH OR	P3/18528/306	1	
12	A	B1	1005-99-960-3101 ..LEVER, LOCKING, CATCH	P3/19121/306	1	
13	A	B1	1005-99-960-2354 ..SCREW, RETAINING, LOCKING CATCH LEVER, UNF, steel, slot drive, no.8 x 1/4in.lg thd x 31/32in.o/a lg	P3/13878/306	1	
14-16	A	B1	1005-99-960-0060 ..SPRING ASSEMBLY, RETURN	P3/13746/S/306	1	
14	A	B1	1005-99-960-2360 ...PLUNGER, RETURN SPRING	P3/13888/306	1	
15	A	B1	1005-99-960-2113 ...SPRING, RETURN, INNER	P3/13890/306	1	
16	A	B1	1005-99-960-2114 ...SPRING, RETURN, OUTER	P3/13889/306	1	
17	A	B1	1005-99-960-2457 ..WASHER	P3/13886/306	1	
18	A	B1	1005-99-960-2355 ..SCREW, RETURN SPRING TUBE	P3/13885/306	1	
19	A	B1	1005-99-960-2109 .COVER, BODY	P3/13903/306	1	



Cover, body— More commonly called the 'dust cover', the Canadian C1 rifle pattern incorporates a charger guide and exposes the front part of the action.



Trigger Mechanism

Fig. Item	Man Code Navy - N Army - A RAF - R		NATO Stock No.	Item Name & Description	Part No. / Drawing No.	No. off	Note
6-0				RIFLE, 7.62MM, L1A1 (contd)			
				..MECHANISM, TRIGGER (contd)			
1	A	B1	1005-99-960-2337	..HAMMER	P3/15275/306	1	
2	A	B1	1005-99-960-2348	..PIN, AXIS, HAMMER	P3/13865/306	1	
3-5	A	B1	1005-99-960-0276	..SPRING ASSEMBLY, HAMMER	P3/19065/S/ 306	1	
3	A	B1	1005-99-960-2358	...HOUSING, HAMMER SPRING	P3/15257/306	1	
4	A	B1	1005-99-960-3089	...SPRING, HELICAL, COMPRESSION	P3/19066/306	1	
5	A	B1	1005-99-960-3004	...STAY, HAMMER	P3/16198/306	1	
6	A	B1	1005-99-960-2362	..TRIGGER	P3/15308/306	1	
7	A	B1	1005-99-960-2099	..SPRING	P3/13868/306	1	
8	A	B1	1005-99-960-2356	..SEAR	P3/13761/306	1	
9	A	B1	1005-99-960-2357	..SLEEVE, TRIGGER AXIS PIN	P3/13754/306	1	
10	A	B1	1005-99-960-2349	..PIN, AXIS, TRIGGER AND SEAR	P3/13866/306	1	
11-13	A	B1	1005-99-960-0679	..LEVER ASSEMBLY, CHANGE	CR 183 SA	1	
11	A	B1	1005-99-960-3102	...LEVER, CHANGE	P3/19122/306	1	
12	A	B1	1005-99-960-2111	...SPRING, HELICAL, COMPRESSION	P3/13837/306	1	
13	A	LV6/MT7	3110-99-950-0568	...BALL, BEARING, steel, 7/32in. dia	Hoffman RFAXI	1	
14	A	G1	5315-99-942-0378	..PIN, COTTER, SPLIT, steel, 1/16in. dia x 3/4in. lg, phos	BS 1574	1	
15-27	A	B1	1005-99-960-0067	..GRIP ASSEMBLY, PISTOL	P3/13924/A/ 306	1	
15-18	A	B1	1005-99-960-0068	...GRIP, PISTOL WITH PERMANENT FITTINGS	P3/13920/S/ 306	1	
15	A	B1	1005-99-960-2331	...GRIP, PISTOL	P3/15244/306	1	
16		NP		...BUSHING, TRIGGER SPRING PLUNGER	P3/15247/306	1	
17	A	B1	1005-99-960-2329	...BUSHING, PISTOL GRIP SCREW	P3/15246/306	1	
18	A	B1	1005-99-960-2328	...BUSHING, COVER SCREW	P3/15245/306	1	
19	A	B1	1005-99-960-2099	...SPRING	P3/13868/306	1	
20	A	B1	1005-99-960-2333	..PLUNGER, TRIGGER SPRING	P3/15251/306	1	
21	A	B1	1005-99-960-2332	..PLATE, PISTOL GRIP	P3/13919/306	1	
22	A	G1	5305-99-941-9427	...SCREW, WOOD, slotted, raised, csk hd, phos, no.5 x 3/4in. lg OR	BS 1210	1	
23	A	B1	1005-99-963-2042	...PISTOL GRIP SUBASSEMBLY	CR 1440	1	
24	A	B1	1005-99-960-2099	...SPRING	P3/13868/306	1	
25	A	B1	1005-99-960-2333	..PLUNGER, TRIGGER SPRING	P3/15251/306	1	
26	A	B1	1005-99-960-2332	..PLATE, PISTOL GRIP	P3/13919/306	1	
27	A	B1	5305-99-135-6258	...SCREW, TAPPING, THREAD FORMING, steel, oval csk hd, no.6 x 3/4in. lg, phos	CR 1441	1	
28	A	G1	5310-99-127-7414	..WASHER, LOCK, steel, flat ext teeth, zinc plated, O BA bolt size	AGS 2034	1	
29	A	B1	5305-99-960-2352	..SCREW, MACHINE, UNF, steel, rd hd, slot drive, phos, 1/4in. x 1-1/4in. lg	P3/15270/306	1	
30-32	A	B1	1005-99-960-0069	..GUARD, TRIGGER	P3/13922/306	1	
30	A	B1	1005-99-960-2373	...COVER, PISTOL GRIP	P3/13921/306	1	
31	A	B1	1005-99-960-2335	...GUARD, TRIGGER	P3/15255/306	1	
32	A	B1	5315-99-960-2336	...PIN, STRAIGHT, HEADED, steel, button hd, phos, 0.080in. dia x 0.590in. lg	P3/15256/306	1	
33	A	B1	5305-99-960-2353	..SCREW, MACHINE, UNF, steel, oval csk hd, slot drive, phos, no.8 x 5/8in. lg OR	P3/15269/306	1	
34-36	A	B1	1005-99-963-2043	..TRIGGER GUARD ASSEMBLY	CR 169A	1	
34		NP		...COVER, PISTOL GRIP	CR 1443	1	
35		NP		...GUARD, TRIGGER	CR 1442	1	
36		NP		...PIN, STRAIGHT, HEADLESS	CR 1444	1	
37	A	B1	5305-99-135-6259	..SCREW, TAPPING, THREAD FORMING, steel, oval csk hd, slot drive, dog pt, phos, no.8 x 5/8in. lg	BS 4174	1	

Butt Assembly

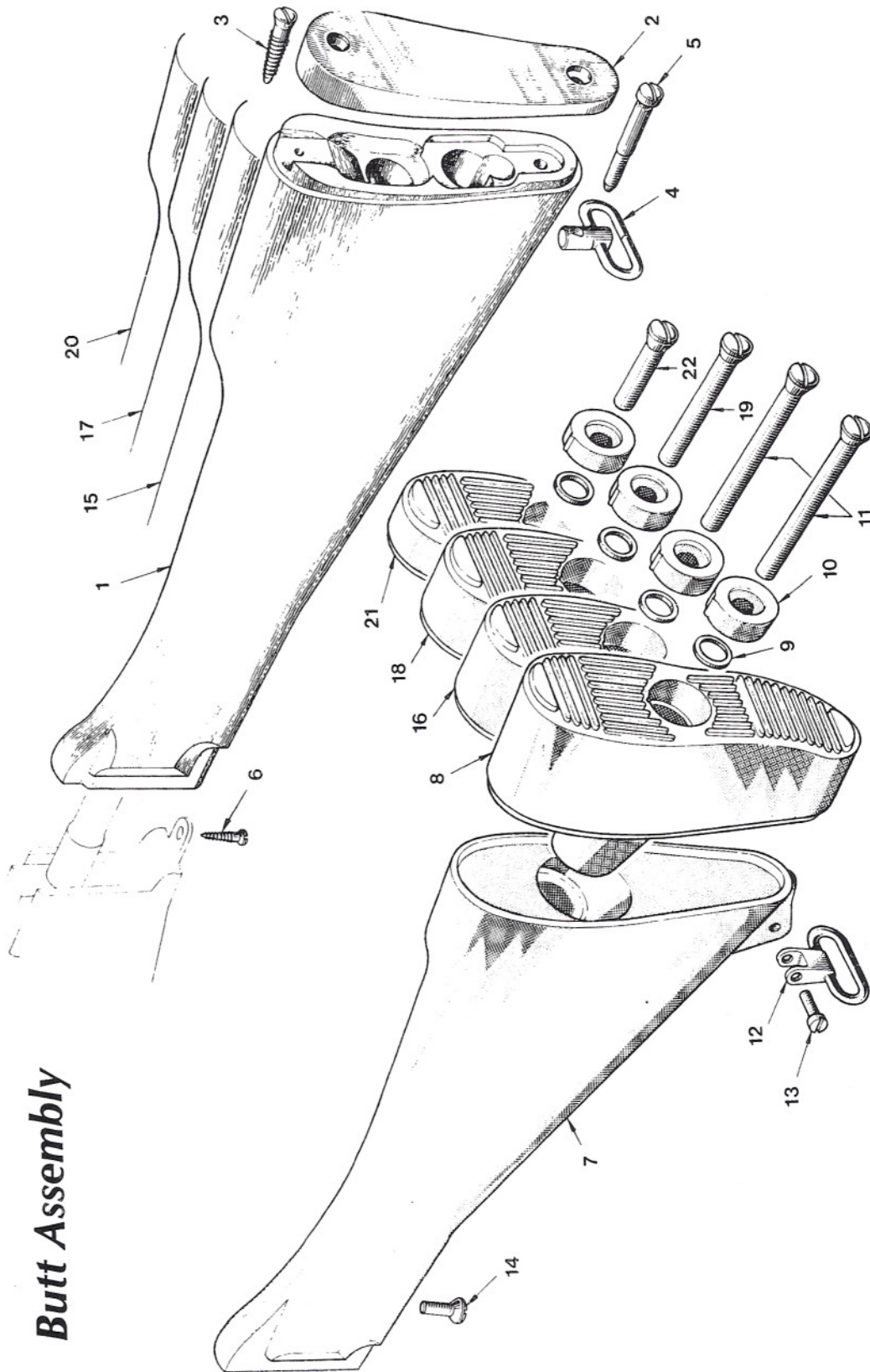


Fig. Item	Man Code Navy - N Army - A RAF - R	NATO Stock No.	Item Name & Description	Part No. / Drawing No.	No. off	Note
7-0			RIFLE, 7.62MM, L1A1 (contd)			
1	A	B1	1005-99-960-3132 .BUTT, SMALL ARMS, extra long, wood	P3/18591/306	1	Extra long
2	A	B1	1005-99-960-3114 .PLATE, BUTT	CR 1453	1	
3	A	G1	5305-99-941-9426 .SCREW, WOOD, steel, oval csk hd, slot drive, phos, no.10 x 1-1/4in. lg	BS 1210	1	
4	A	B1	1005-99-960-3086 .LOOP, SLING, REAR	P3/18803/306	1	
5	A	B1	1005-99-960-2022 .SCREW, SHOULDER, UNF, steel, fil hd, slot drive, phos, no.10 x 1-7/16in. lg	P3/15398/306	1	
6	A	G1	5305-99-948-0069 .SCREW, WOOD, steel, oval csk hd, slot drive, phos, no.9 x 7/8in.lg OR	BS 1210	1	
7	A	B1	1005-99-963-2039 .BUTT, SMALL ARMS, plastics	CR 1436	1	
8	A	B1	1005-99-963-0324 .PLATE, BUTT, plastics, 1 mtg hole, 0.594in.dia max, extra long butt	CR 1477	1	Extra long
9	A	B1	1005-99-963-0321 .WASHER, CAP, BUTT, steel, 0.485in.id, 0.575in.od, 0.020in.thk	CR 1474	AR	
10	A	B1	1005-99-963-2040 .PLUG, BUTT PLATE	CR 1438	1	
11	A	B1	5305-99-135-9885 .SCREW, MACHINE, UNF, steel, oval csk hd, slot drive, phos, 1/4in.x 2-1/2in.lg	CR 1446/1	1	
12	A	B1	1005-99-963-2041 .SWIVEL, SMALL ARMS SLING	CR 1449	1	
13	A	B1	5305-99-960-2310 .SCREW, MACHINE, UNF, steel, flat fil hd, slot drive, phos, no.8 x 19/32in.lg	P3/13778/306	1	
14	A	B1	5305-99-135-6259 .SCREW, TAPPING, THREAD FORMING, steel, oval csk hd, slot drive, no.8 x 5/8in.lg OR	CR 1445	1	
15	A	B1	1005-99-960-3093 .BUTT, SMALL ARMS, long butt, wood	P3/18591/306	1	Long
16	A	B1	1005-99-963-0323 .PLATE, BUTT, plastics, 1 mtg hole, 0.594in.dia max, long butt OR	CR 1476	1	Long
17	A	B1	1005-99-960-3094 .BUTT, SMALL ARMS, normal butt, wood	P3/18591/306	1	Normal
18	A	B1	1005-99-963-2044 .PLATE, BUTT, plastics, 1 mtg hole, 0.594in.dia max, normal butt	CR 1437	1	Normal
19	A	B1	5305-99-135-9886 .SCREW, MACHINE, UNF, steel, oval csk hd, slot drive, phos, 1/4in.x 2in. lg	CR 1446/2	1	
20	A	B1	1005-99-960-3095 .BUTT, SMALL ARMS, short butt, wood	P3/18591/306	1	Short
21	A	B1	1005-99-963-0322 .PLATE, BUTT, plastics, 1 mtg hole, 0.594in.dia max, short butt	CR 1475	1	Short
22	A	B1	5305-99-135-9887 .SCREW, MACHINE, UNF, steel, oval csk hd, slot drive, phos, 1/4in.x 1-1/2in.lg	CR 1446/3	1	

Accessories & Ancillaries

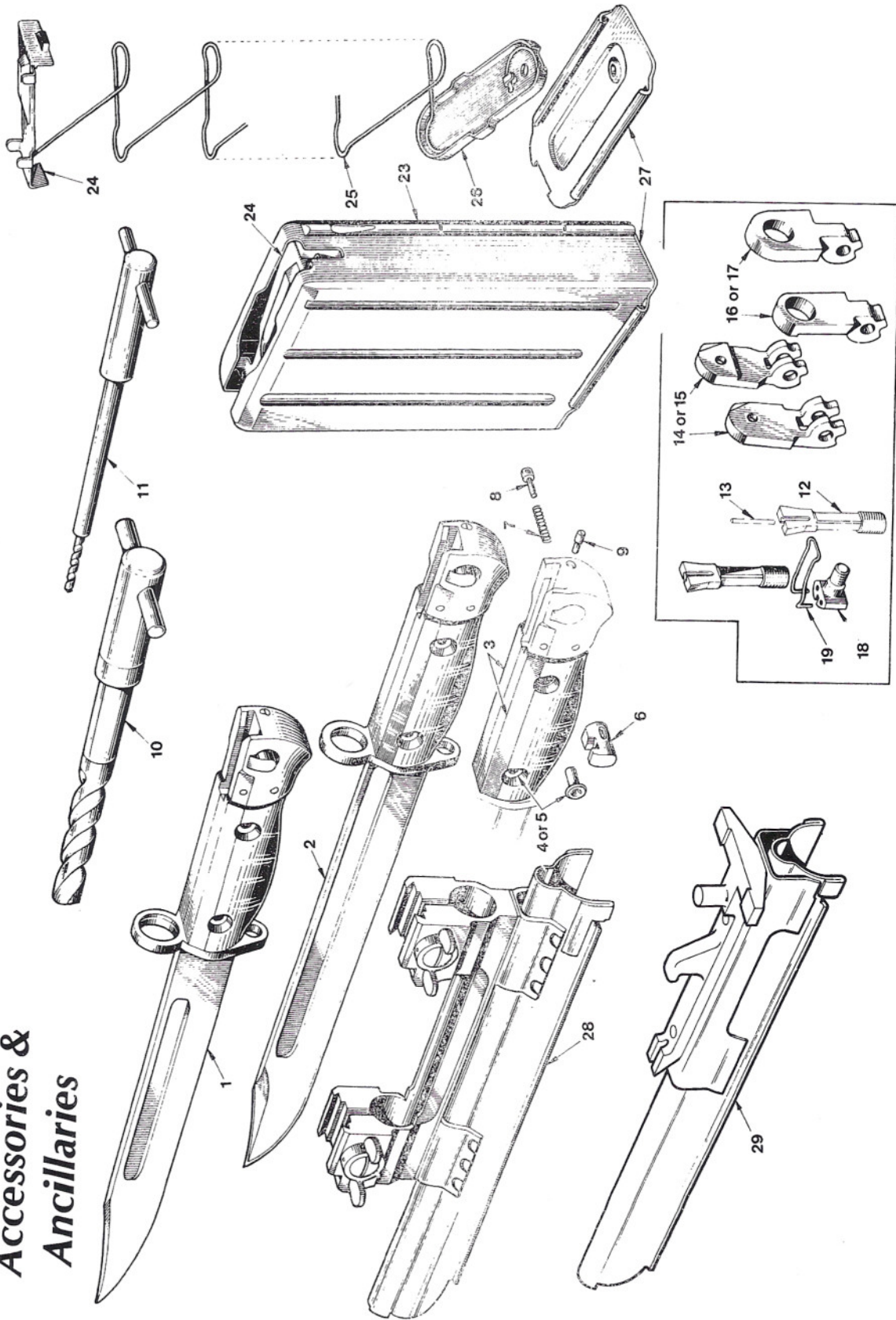


Fig. Item	Man Code Navy - N Army - A RAF - R	NATO Stock No.	Item Name & Description	Part No. / Drawing No.	No. off	Note
1-0			ACCESSORIES/ANCILLARIES			
1-9	A	B1	1005-99-960-0257	BAYONET,L1A3 and L1A4	P3/18268/A/ 337	1
1			1005-99-960-0258	.BLADE,BAYONET	P3/18269/S/ 337	1
2			1005-99-960-0260	OR .BLADE,BAYONET	P3/18273/S/ 337	1
3	A	B1	1005-99-960-2379	.GRIP,BAYONET	P3/15407/337	2
4	A	B1	5325-99-960-2376	.EYELET,METALLIC	P3/15405/337	2
5	A	B1	1005-99-960-5325	OR .EYELET,METALLIC	P3/15405/337	2
6	A	B1	1005-99-960-3063	.CATCH,steel,phos finish	P3/18270/337	1
7	A	B1	5360-99-960-3064	.SPRING,HELICAL,COMPRESSION,steel, 12 active coils,3/16in.od,7/8in. lg	P3/18083/337	1
8	A	B1	5315-99-960-2380	.PIN,STRAIGHT,HEADED,steel,flat fil hd,phos,0.130in.od x 0.400in. lg	P3/15406/337	1
9	A	B1	5305-99-960-2381	.SCREW,GRUB,ANF,steel,slot drive, flat pt,phos,no.8 x 0.530in.lg	P3/15409/337	1
10	A	B2	1005-99-962-7229	CLEANER,BLANK AMMUNITION FIRING ATTACHMENT,no.1	5442/1A	1
11	A	B2	1005-99-962-7658	CLEANER,BLANK AMMUNITION FIRING ATTACHMENT,no.2	5442/2A	1
12-19	A	B1	1005-99-960-2505	CONVERSION KIT,7.62mm RIFLE SIGHT, TRILUX,L5A1	CR 3K	1
12-13	A	B1	1005-99-960-2506	.FORESIGHT ASSEMBLY,TRILUX	CR 156 SA	1
12		NP		..BLADE,FORESIGHT	CR 1286	1
13		NP		..LUMINOUS TUBE,TRILUX	OS 8182	1
14	A	B1	1005-99-960-2508	.LEAF,BACKSIGHT,front	CR 1290 Sht 1	1
15		NP		OR .LEAF,BACKSIGHT,front	CR 1290 Sht 2	1
16	A	B1	1005-99-960-2507	.LEAF,BACKSIGHT,rear	CR 1289 Sht 1	1
17		NP		OR .LEAF,BACKSIGHT,rear	CR 1289 Sht 2	1
18	A	B1	1005-99-960-2509	.SCREW,POSITIONING,LOCKING SPRING	CR 1287	1
19	A	B1	1005-99-960-2510	.SPRING,LOCKING FORESIGHT	CR 1288	1
NI 20-22	A	B1	1005-99-964-1249	CONVERSION KIT,7.62mm RIFLE SIGHT, TRILUX,L5A3	CR 189 A	1
NI 20	A	B1	1005-99-964-1261	.FORESIGHT,7.62mm rifle,trilux, L2A2	CR 199 SA	1
NI21		NP		.BLADE,FORESIGHT	CR 1535	1
NI22		NP		.LAMP,NUCLEAR,tritium filled	Def 62-4 KBG	1
23-27	A	B1	1005-99-960-0017	MAGAZINE,ROUND,L2A1,steel, 20 rounds	P3/16307/A/ 306	1
23	A	B1	1005-99-960-2043	.CASE,MAGAZINE	P3/16306/306	1
24-26	A	B1	1005-99-960-0018	.PLATFORM,MAGAZINE,ASSEMBLY	P3/16305/306	1
24	A	B1	1005-99-960-3059	..PLATFORM,MAGAZINE	P3/18105/306	1
25	A	B1	1005-99-960-2383	..SPRING,PLATFORM	P3/13902/306	1
26	A	B1	1005-99-960-3000	..RETAINER	P3/17717/306	1
27	A	B1	1005-99-960-2044	.PLATE,BOTTOM	P3/16611/306	1
28	A	B1	1005-99-960-8126	MOUNT,INFRARED WEAPONSIGHT	CR 156 A	1
29	A	B1	1005-99-965-2685	MOUNT,WEAPONSIGHT	CR 193 A	1

Obsolescent

Accessories & Ancillaries

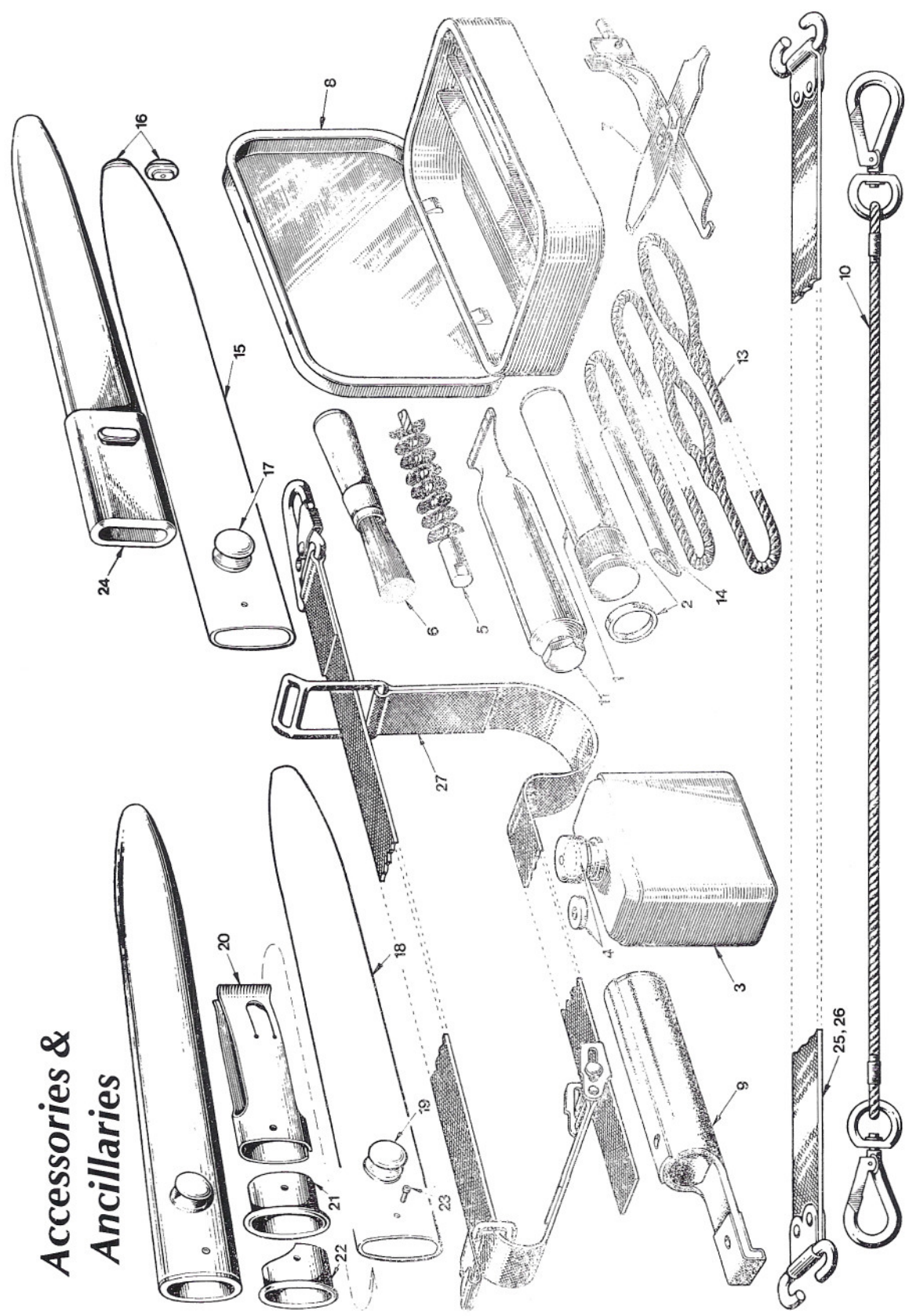


Fig. Item	Man Code Navy - N Army - A RAF - R	NATO Stock No.	Item Name & Description	Part No. / Drawing No.	No. off	Note
2-0			ACCESSORIES/ANCILLARIES			
1	A	B1	8125-99-961-9248 BOTTLE,APPLICATOR,plastics,1/2 fluid oz,round shape	SM 52A	1	
2	A	B1	5330-99-961-9247 .WASHER,NONMETALLIC,leather, 0.610in.id,0.720in.od,0.094in. thk	SM 510	1	
3	A	C1	8125-99-961-8267 BOTTLE,APPLICATOR	DD(E)1820	1	
4		NP	.WASHER,NONMETALLIC	DD(E)1820	1	
5	A	B1	1005-99-960-2030 BRUSH,CLEANING,7.62mm,CHAMBER AND GAS CYLINDER	P3/16267/A/340	1	
6	A	B2	1005-99-961-7994 BRUSH,CLEANING,SMALL ARMS	SM58	1	
7	A	B2	4933-99-960-0015 COMBINATION TOOL,7.62mm rifle,MK1	P3/16273/A/340	1	
8	A	B1	1005-99-964-8959 CONTAINER,CLEANING KIT,SMALL ARMS, L1A1,plastic	SM 996	1	
9	A	B1	1005-99-962-3091 COVER,MUZZLE	CR 1450	1	
10	A	B1	1005-99-962-3099 LANYARD,SMALL ARMS,L1A1	CR 187 SA	1	
11	A	POL	9150-99-220-5175 GREASE,GRAPHITE,XG-264,3/4 oz tube	Def Stan 91-18	1	
NI12	A	B1	1005-99-962-8317 PACK,TRANSIT,expanded polystyrene, 1254mm lg,387mm w,121mm h	PK 3106A	1	
13-14	A	B1	1005-99-960-0013 PULLTHROUGH,MK7	CM 1446A	1	
13	A	B1	1005-99-960-2025 .CORD	CM 9290	1	
14	A	B1	1005-99-960-2026 .WEIGHT	CM 9291	1	
15-23	A	B1	1095-99-960-0278 SCABBARD,BAYONET,no.5 Mk1	SM 54A	1	
15-17		NP	.BODY	SM 19 SA	1	
15		NP	..TUBE	SM 521	1	
16		NP	..TIP	SM 520	1	
17		NP	..BUTTON	SM 437	1	
			OR			
18-19		NP	.BODY	SM 21 SA	1	
18		NP	..TUBE	SM 436	1	
19		NP	..BUTTON	SM 437	1	
20	A	B1	1095-99-961-7969 .SPRING,BAYONET SCABBARD	SM 524	1	
21	A	B1	1095-99-961-7970 .MOUTHPIECE BAYONET SCABBARD	SM 523	1	
			OR			
22	A	B1	1095-99-961-7971 .MOUTHPIECE,BAYONET SCABBARD	SM 522	1	
23		NP	.SCREW,MACHINE,BA,steel,fil hd, phos,no.6 x 3/16in.lg		1	
			OR			
24	A	B1	1095-99-962-0006 SCABBARD,BAYONET,L3A1,nylon form, black,designed for 8in.lg blade	CR 1416	1	
25	A	CN	1005-99-960-3065 SLING,RIFLE,WEB,khaki drab,46in. x 1-1/4in.w,brass catch	Patt No. 9143	1	
26	A	CN	1005-99-960-3066 SLING,RIFLE,WEB,khaki drab,46in. x 1-1/4in.w,brass catch	Patt No. 514	1	
27	A	CN	1005-99-962-5382 SLING,SMALL ARMS,L2A1,polyester webbing	CR 170A	1	

Items 9, 10 and 27 for use in Arctic conditions only.

Item 26 restricted for commando/airborne troops in jungle area.

Also refer to pages 76-80 and 91-92 of 'S.L.R. - Australia's F.N. F.A.L.' for the Australian issue bayonets, scabbards, chargers, slings and tool rolls.

Blank-fire Attachment

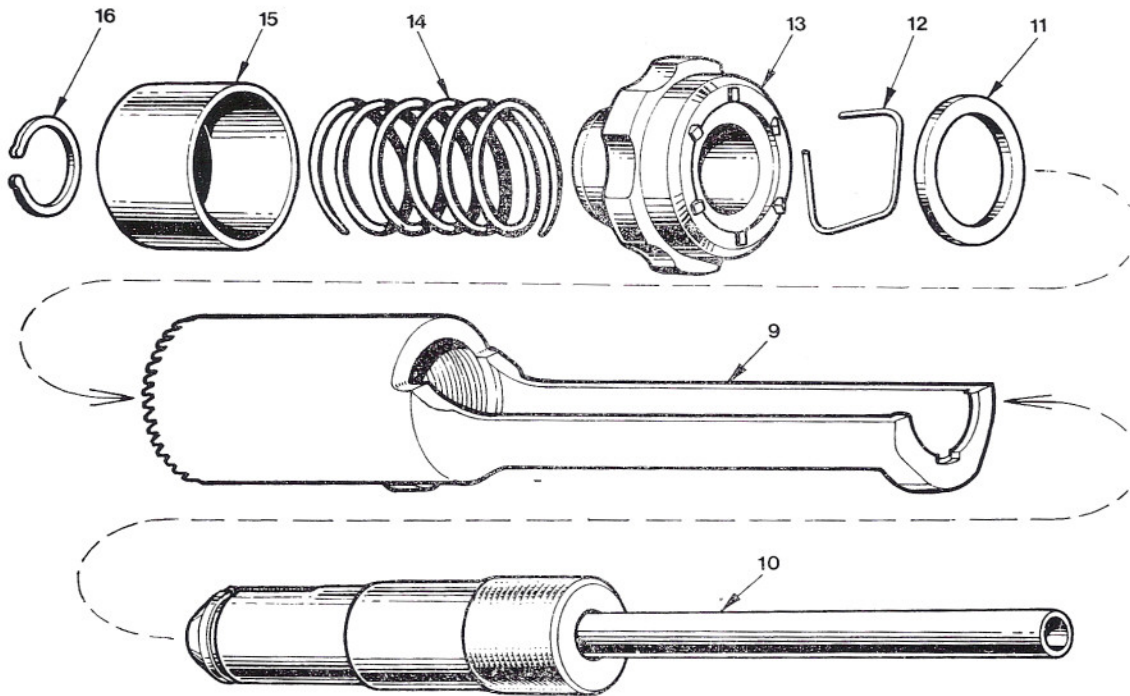
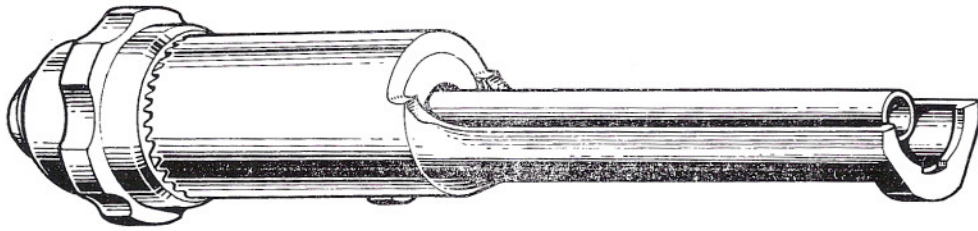
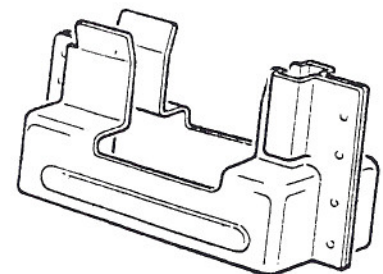
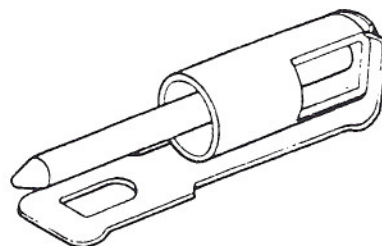
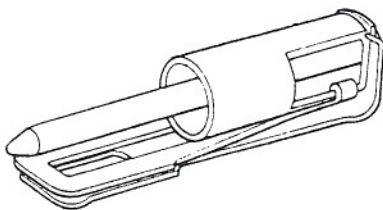
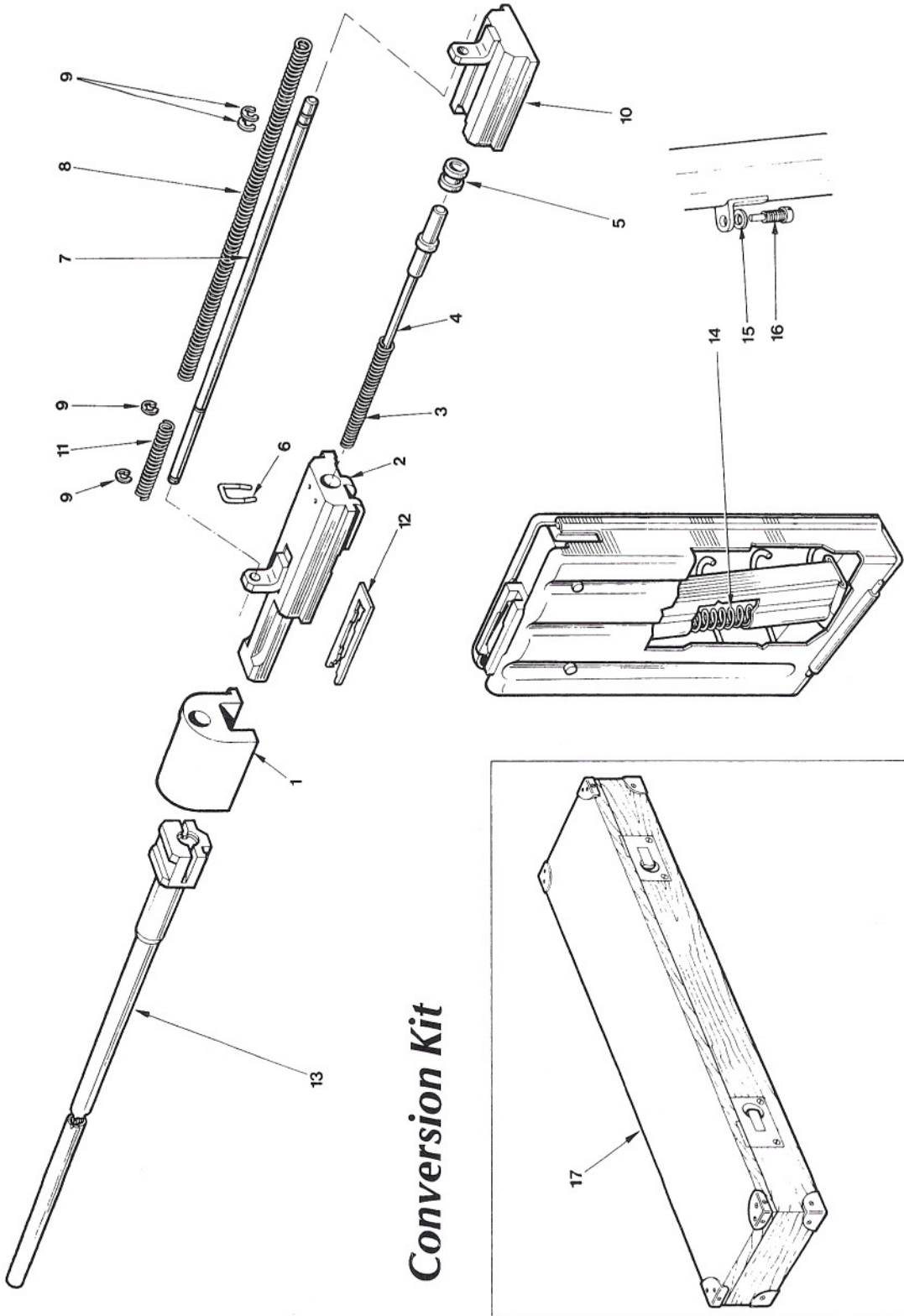


Fig. Item	Man Code Navy - N Army - A RAF - R	NATO Stock No.	Item Name & Description	Part No. / Drawing No.	No. off	Note
3-0			ACCESSORIES/ANCILLARIES			
NI 1-8	A	B2	1005-99-960-0110	FIRING ATTACHMENT, BLANK AMMUNITION, L1A2 7.62mm RIFLE	DD(E)20137/ A/280	1 Preferred pattern
NI 1			NP	.SLEEVE, steel, .840in. dia, 2.312in. o/a lg, phos	P3/19083/280	1
NI 2			NP	.SPINDLE, steel, .283in. dia, 4.29in. o/a lg	P3/19082/280	1
NI 3			NP	.SPRING, steel, 3.900 o/a lg, 1.00in. w, .064in. thk	DD(E)20254/ 280	1
NI 4			NP	.WASHER, steel, 5/16in. dia	BS 1768	1
NI 5			NP	.RETAINER	DD(E)20255/ 280	1
NI 6	A	B3	1005-99-960-2184	.SPRING, HELICAL, COMPRESSION, steel, 3-1/2 active turns, .38in. od, .50in. free lg	CR 1111	1
NI 7	A	Z2	5310-99-120-2311	.WASHER, LOCK, steel, internal teeth, zn plated, 3/16in. dia bolt size	Barber & Colman 1210A	1
NI 8	A	G1	5310-99-461-6734	.NUT, PLAIN, HEXAGON, steel, 0.127in. thk, 0.324in. A/F, Cd plated, 2 BA bolt size	BS 57	1
9-16	A	B2	1005-99-961-8661	OR FIRING ATTACHMENT, BLANK AMMUNITION, 7.62mm RIFLE, L6A1	CR 166A	1 Obsolescent
9			NP	.BODY, FIRING ATTACHMENT	CR 1408	1
10	A	B2	1005-99-962-8918	.TUBE, FIRING ATTACHMENT	CR 1409	1
11	A	B2	5310-99-962-8619	.WASHER, THRUST, steel, 0.820in. id, x 1.080in. od x 0.039in. thk, phos	CR 1410	1
12	A	B2	1005-99-962-8580	.WIRE, RETAINING CLIP	CR 1415	1
13	A	B2	1005-99-962-8579	.COLLAR, LOCKING	CR 1411	1
14	A	B2	1005-99-962-8620	.SPRING, HELICAL, COMPRESSION, steel, 5 active turns, 1.08in. od x 1.30in. lg	CR 1412	1
15	A	B2	1005-99-962-8578	.COVER, HELICAL SPRING	CR 1413	1
16	A	LV6/MT1	5340-99-910-8239	.RING, RETAINING, steel, ext, 17mm id, 1mm thk, phos	Anderton 1400-17mm	1



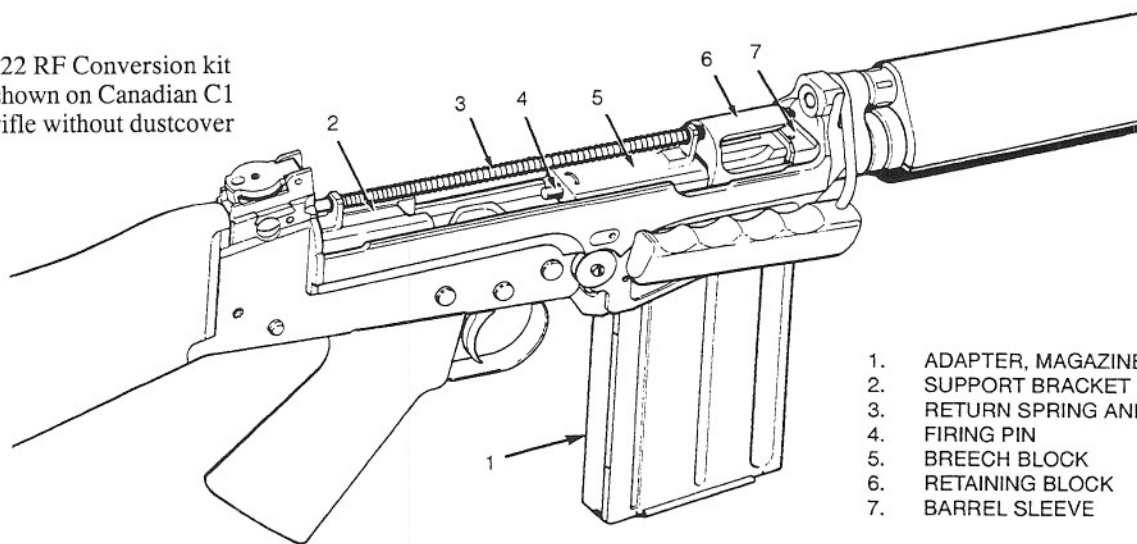
Australian and Canadian manufacture Blank-fire attachments, commonly called 'BFA's' are different to their British-made counterparts. Some are cast and machined, others are pressed and spot-welded sheet metal. Magazine fillers via charger clips are spot-welded pressed metal, and variations in production and finish will be noted.



Conversion Kit

Fig. Item	Man Code Navy - N Army - A RAF - R	NATO Stock No.	Item Name & Description	Part No. / Drawing No.	No. off	Note
4-0			ACCESSORIES/ANCILLARIES			
1-17	A	B2	6920-12-147-6954	CONVERSION KIT, 7.62MM RIFLE, .22 calibre, L12A1	CR 74 GA	1
1-12	A	B2	1005-12-147-6956	..BREECH MECHANISM ASSEMBLY	4900-02	1
1		NP	..BLOCK RETAINING SPRING	4900-02-01	1	
2-6	A	B2	1005-12-147-6960	..BREECH MECHANISM SUB ASSEMBLY	4900-04	1
2		NP	...BREECH BLOCK	4900-05	1	
3	A	B2	5340-12-147-6969	...SPRING, HELICAL, COMPRESSION	69069-14-05	1
4	A	B2	1005-12-147-6968	...PIN, FIRING	69069-14-04	1
5	A	B2	1005-12-147-6962	...BUSHING, FIRING PIN	4900-04-02	1
6	A	B2	5340-12-147-6961	...CLIP, RETAINING	4900-04-01	1
7	A	B2	1005-12-147-6959	..PIN, GROOVED, HEADLESS	4900-02-03	1
8	A	B2	5340-12-147-6967	..SPRING, HELICAL, COMPRESSION	69069-10-01	1
9	A	LV6/MT1	5340-12-125-0254	..RING, RETAINING, steel, circlip, ext, 3.2mm id, 7mm od, 0.6mm thk, phos	3-2 DIN 6799	4
10	A	B2	1005-12-147-6958	..BRACKET, SUPPORTING	4900-03	1
11	A	B2	5340-12-147-6957	..SPRING, HELICAL, COMPRESSION	4900-02-02	1
12	A	B2	1005-12-147-6970	..PLATE, EXTRACTOR	69069-14-01	1
13	A	B2	1005-12-147-6955	..BARREL, RIFLE, .22 calibre	4900-01	1
14-16	A	B2	1005-12-147-6963	..MAGAZINE ASSEMBLY	4900-07	1
14-16	A	B2	1005-12-147-6971	..MAGAZINE, ROUND	4900-08	1
14	A	B2	5340-12-147-6972	...SPRING, HELICAL, COMPRESSION	69069-42-01	1
15		NP	...WASHER, FLAT		1	
16		NP	...SCREW		1	
17	A	B2	6920-12-147-6964	..CASE, 7.62mm RIFLE CONVERSION KIT	4900-11	1

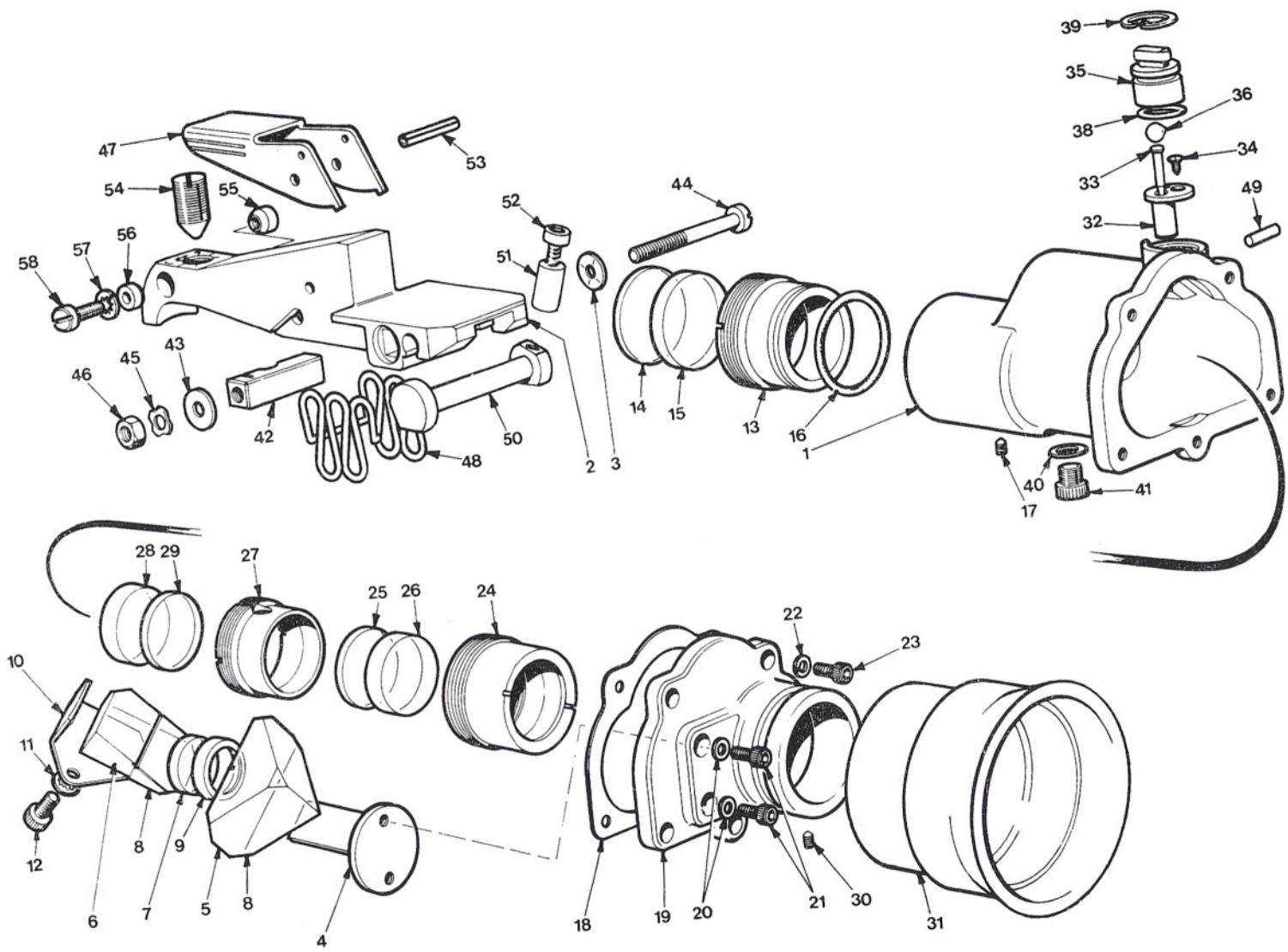
.22 RF Conversion kit shown on Canadian C1 rifle without dustcover



1. ADAPTER, MAGAZINE
2. SUPPORT BRACKET
3. RETURN SPRING AND ROD
4. FIRING PIN
5. BREECH BLOCK
6. RETAINING BLOCK
7. BARREL SLEEVE

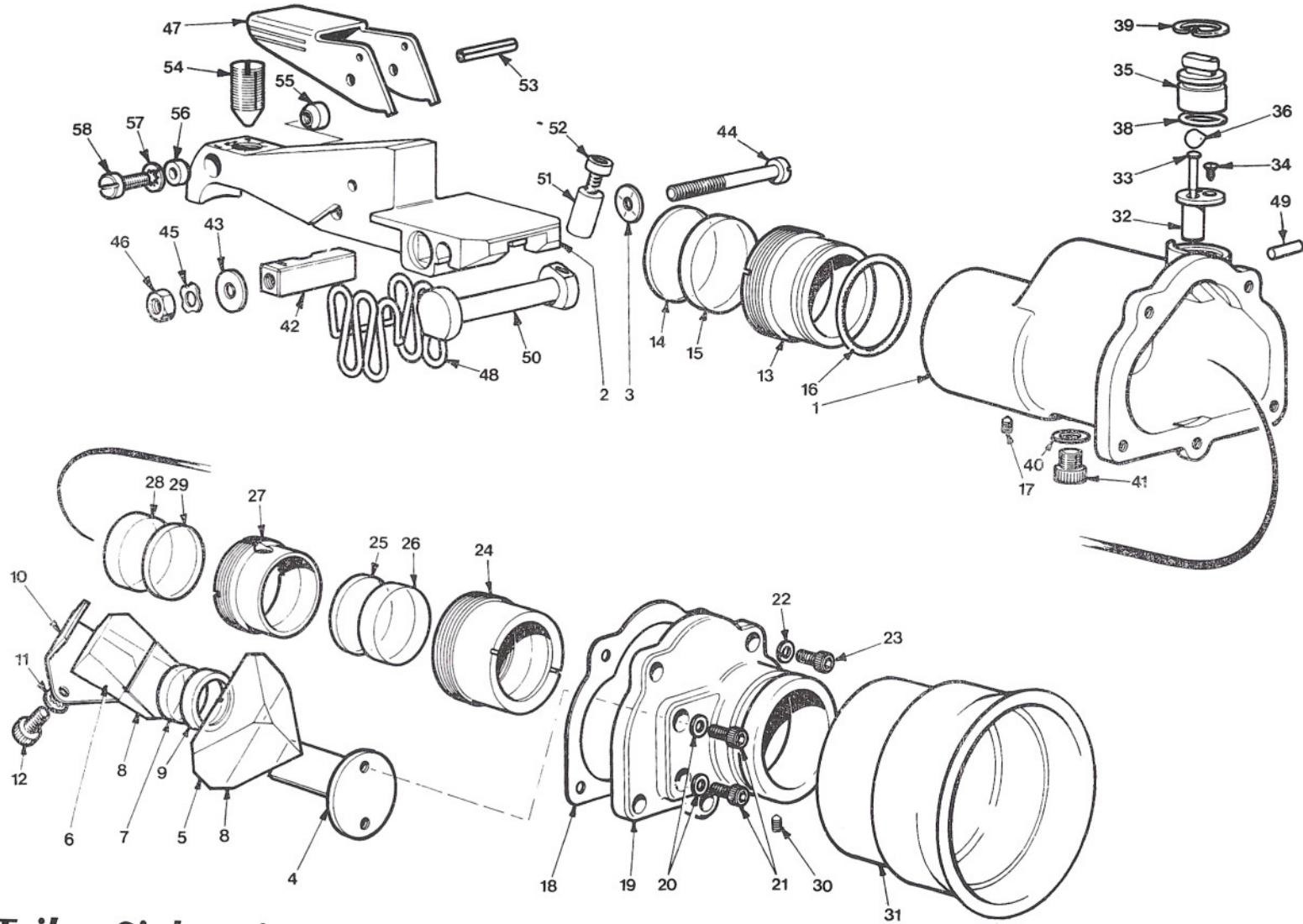
CONVERSION KIT 7.62 millimetre Rifle .22 inch Calibre L12A1

- Installation—
1. Remove the magazine, body cover, breech block and carrier from the rifle. Clean bore, leave dry.
 2. Clean the exterior of the .22-inch barrel and leave dry. Insert it into the bore of the rifle with part number to the top. Do not use force.
 3. Lubricate sliding surfaces of the .22 inch breech mechanism, using 0-158 and install into the rifle. Replace the body cover and close the rifle.
- Removal—
4. Ensure that the rifle is 'CLEAR'.
 5. Remove the body cover and breech mechanism.
 6. Clean and oil the bore of the .22 inch barrel. Remove the magazine and .22 inch barrel. Do not force.
 7. Clean and lightly oil the remainder of the conversion kit, using oil 0-190 and replace in the case.
 8. Reassemble the rifle.



Trilux Sightunit

Fig. Item	Man Code Navy - N Army - A RAF - R	NATO Stock No.	Item Name & Description	Part No. / Drawing No.	No. off	Note
5-0	A V5	1240-99-964-7647	ACCESSORIES/ANCILLARIES SIGHTUNIT,Infantry Trilux,L2A2	OS 5857 A	1	
1-3		NP	.BODY AND ARM ASSEMBLY,SIGHTUNIT	OS 88382	1	
1		NP	..BODY,SIGHTUNIT	WP 19434	1	
2	A V5	1240-99-964-9483	..ARM,SIGHTUNIT	WP 18069	1	
3		NP	..WASHER,RECESSED	OS 86122	1	
4-9	A V5	1240-99-964-8315	.PRISM ASSEMBLY,OPTICAL INSTRUMENT	OS 88146	1	
4		NP	..HOLDER,OPTICAL ELEMENT	WP 19272	1	
5-7		NP	..PRISM AND LENS ASSEMBLY	WP 18057	1	
5		NP	...PRISM	WP 18058	1	
6		NP	...PRISM	WP 18059	1	
7		NP	...LENS	WP 18060	1	
8		NP	..GASKET,syn rubber,25mm x 35mm x 0.4mm thk	Angus E75	2	
9		NP	..STOP	WP 18061	1	
10	A V5	1240-99-965-2777	.SCREEN	OS 85555	1	
11	A G1	5310-99-137-6560	.WASHER,LOCK,steel,Cd plated,flat int teeth,3mm bolt size,1/4in. od,1/64in.thk	Barber & Colman 1205M	1	
12	A G1	5305-99-135-1302	.SCREW,SOCKET HEAD, ISO metric, steel,flat fil hd,Cd plated, 3mm x 8mm lg	BS 4168	1	
13-16	A V5	1240-99-963-7198	.CELL ASSEMBLY,OPTICAL INSTRUMENT, steel,1 element,30mm dia,20mm lg	OS 85550	1	
13		NP	..CELL,OPTICAL ELEMENT	WP 18065	1	
14-15		NP	..LENS	WP 18062	1	
14		NP	...LENS	WP 18063	1	
15		NP	...LENS	WP 18064	1	
16	A LV6/MT1	5330-99-200-7618	..RING,SEALING,TOROIDAL,syn rubber,1in.id,0.070in.h	BS 1806	1	
17	A G1	5305-99-138-3613	.SCREW,GRUB,ISO metric,steel,slot drive,oval point,Cd plated, 2.00mm x 3.00mm lg	BS 4219	1	
18	A V5	5330-99-963-7202	.GASKET,rubber,irregular shape, 65mm lg,0.41mm thk	OS 85556	1	
19		NP	.COVER,SIGHTUNIT	OS 85553	1	
20	A LV6/MT1	5330-99-943-3483	.WASHER,SEAL,FLAT,syn rubber/ steel,0.160in.id,0.291in.od, 0.054in.thk	AGS 1186 MK 2	2	
21	A G1	5305-99-135-1309	.SCREW,SOCKET HEAD,ISO metric, steel,flat fil hd,Cd plated, 4.00mm x 8.00mm lg	BS 4168	2	
22	A G1	5310-99-135-9290	.WASHER,LOCK,steel,split helical ring,3.00mm bolt size,5.50mm od, 1.00mm thk	BS 4464	5	
23	A G1	5305-99-135-1302	.SCREW,SOCKET HEAD,ISO metric, steel,flat fil hd,Cd plated, 3.00mm x 8mmlg	BS 4168	5	
24-29	A V5	1240-99-963-7296	.EYEPIECE ASSEMBLY,OPTICAL INSTRUMENT,fixed type,2 compound lenses	OS 10569 SA	1	
24		NP	..CELL,OPTICAL ELEMENT	OS 85547	1	
25-26		NP	..LENS,OPTICAL INSTRUMENT	OS 85514	1	
25		NP	...LENS	WP 18054	1	
26		NP	...LENS	WP 18055	1	
27		NP	..SLEEVE	OS 85548	1	
28-29		NP	..LENS,OPTICAL INSTRUMENT	OS 85514	1	
28		NP	...LENS	WP 18054	1	
29		NP	...LENS	WP 18055	1	
30	A G1	5305-99-138-3613	.SCREW,GRUB,ISO metric,steel,slot drive,oval point,Cd plated, 2.00mm x 3.00mm lg	BS 4219	1	
31	A V5	1240-99-965-3387	.EYESHIELD,OPTICAL INSTRUMENT, rubber,37mm dia attachment end, 45mm o/a lg,adhesive mounted	OS 90249	1	



Trilux Sightunit

Fig. Item	Man Code Navy - N Army - A RAF - R	NATO Stock No.	Item Name & Description	Part No. / Drawing No.	No. off	Note
5-0			ACCESSORIES/ANCILLARIES (contd) SIGHTUNIT, Infantry Trilux, L2A2			
			(contd)			
32-33	A	V5	1240-99-963-7199	.RETICLE ASSEMBLY, SIGHTUNIT	OS 85551	1
32			NP	..MOUNT, RETICLE	WP 18066	1
33			NP	..RETICLE, OPTICAL INSTRUMENT	WP 18067	1
34	A	G1	5305-99-136-2879	.SCREW, MACHINE, ISO metric, steel, flat csk hd, slot drive, Cd plated, 2.0mm x 5.0mm lg	BS 4183	1
35-37	A	V5	1240-99-965-2011	.LAMPHOLDER ASSEMBLY, SIGHTUNIT	OS 11249 SA	1
35			NP	..HOLDER	OS 85552	1
36	A	X4	6260-99-965-3088	..LAMP, NUCLEAR	OS 89029	1
NI37	A	V5	9905-99-965-0441	..LABEL, HAZARD WARNING		1
38	A	LV6/MT1	5330-99-924-4906	.PACKING, PREFORMED, syn rubber, O.364in.id, O.504in.od, O.070in.thk	Pioneer Seals 4-007	1
39	A	LV6/MT1	5340-99-910-8272	.RING, RETAINING, steel, int, phos, 1/2in. bore dia	Def Stan 53-20 table 1B	1
40	A	LV6/MT1	5330-99-942-9636	.WASHER, SEAL, FLAT, syn rubber/steel, O.205in.id, O.330in.od, O.050in.thk	AGS 1186 Mk 3	1
41			NP	.SCREW, SOCKET, BUTTON HEAD, metric, steel, Cd plated, 5.00mm x 6.00mm lg	BS 4168	1
42	A	V5	1240-99-964-7471	.BLOCK, ALIGNMENT	OS 86143	1
43	A	V5	1240-99-965-2778	.WASHER, FLAT, steel, 11.5mm od x 4.2mm id	OS 86130	1
44	A	V5	5305-99-963-7208	.SCREW, MACHINE, metric, steel, flat fil hd, slot drive, phosphated, max O.7 x 42mm lg, screw length 22mm	OS 85560	1
45	A	G1	5310-99-135-2546	.WASHER, SPRING TENSION, crinkle, M4, Be Cu	BS 4463	1
46	A	G1	5310-99-135-0766	.NUT, PLAIN, HEXAGON, metric, steel, Cd plated, M4	BS 3692	1
47	A	V5	1240-99-965-2013	.LATCH, SIGHTUNIT	OS 88375	1
48	A	V5	1240-99-966-2787	.CLIP, SIGHTUNIT	OS 93174	1
49	A	G1	5315-99-127-7252	.PIN, SPRING, steel, Cd plated, 1/8in. dia, 3/4in. lg	Unbrako	1
50	A	V5	1240-99-965-2017	.CAM, CONTROL	OS 88381	1
51	A	V5	1240-99-965-2014	.COLLAR	OS 88376	1
52	A	G1	5305-99-135-1312	.SCREW, SOCKET HEAD, metric, steel, fil hd, Cd plated, 4mm x 16mm lg	BS 4168	1
53			NP	.PIN, TENSION, 3.18mm x 17.0mm lg	DIN 1481	1
54	A	V5	5305-99-965-3622	.SCREW, GRUB, metric, steel, slot drive, non-standard flat point, M8 x 0.75 x 22mm lg	OS 90940	1
55	A	V5	1240-99-965-2015	.PLUG, SCREW	OS 88379	1
56	A	V5	1240-99-965-2016	.CLAMP, SCREW	OS 88380	1
57	A	G1	5310-99-137-6560	.WASHER, SPRING TENSION, steel, flat int teeth, Cd plated, 3mm nom bolt size, 1/4in.od, 1/64in.thk	Barber & Colman 1205M	1
58	A	G1	5305-99-135-0690	.SCREW, MACHINE, metric, steel, pan hd, slot drive, Cd plated, M3 x 0.50 x 12mm lg	BS 4183	1
NI59	A	V5	9905-99-965-3961	.PLATE, IDENTIFICATION	OS 88378	1
NI60	A	V5	1240-99-964-9272	POUCH, SIGHTUNIT, INFANTRY, L1A2	OS 5874 A	1

Also refer to pages 80-87, 'S.L.R. - Australia's F.N. F.A.L.' for the Australian application of unit, SUIT, 'Starlight', infra-red, reflex and trilux optical sights

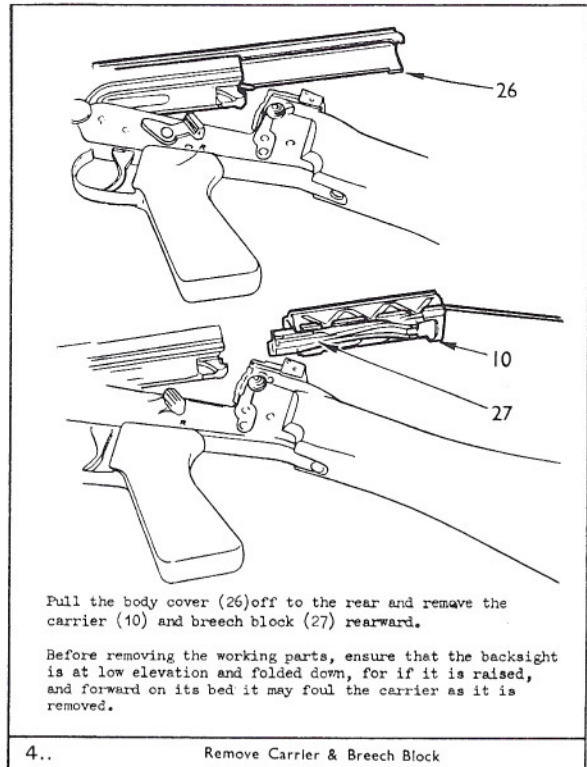
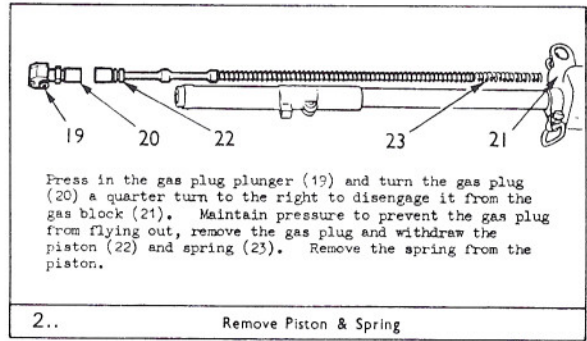
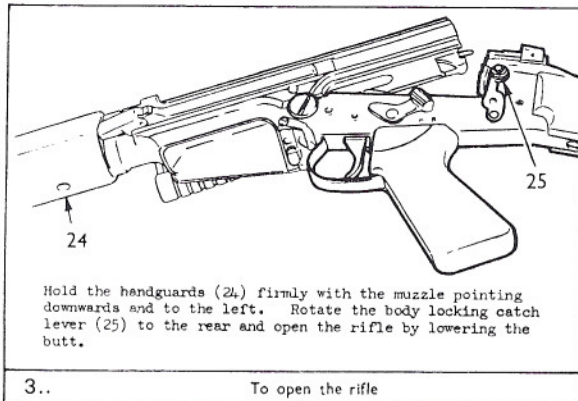
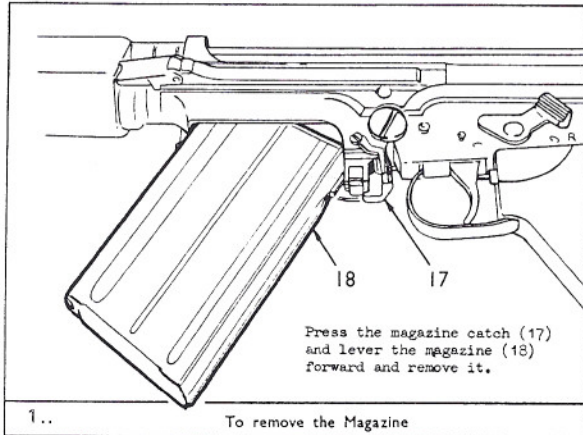
STRIPPING & ASSEMBLY

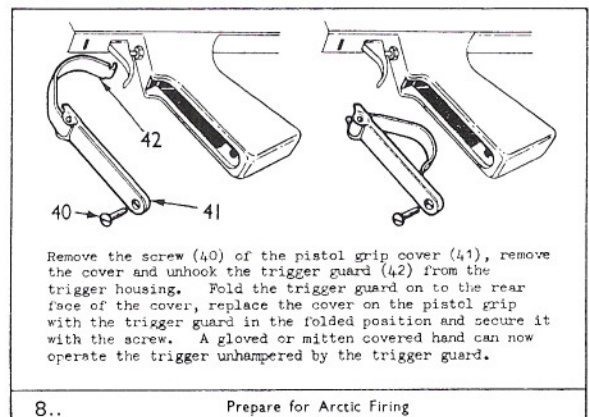
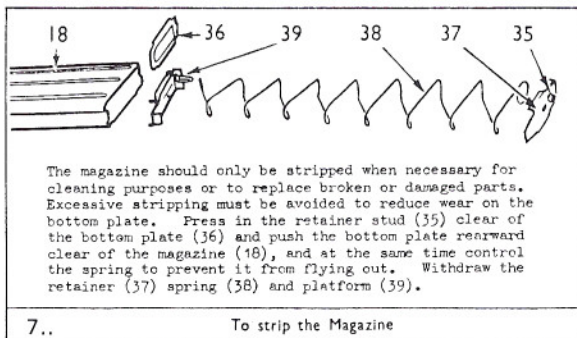
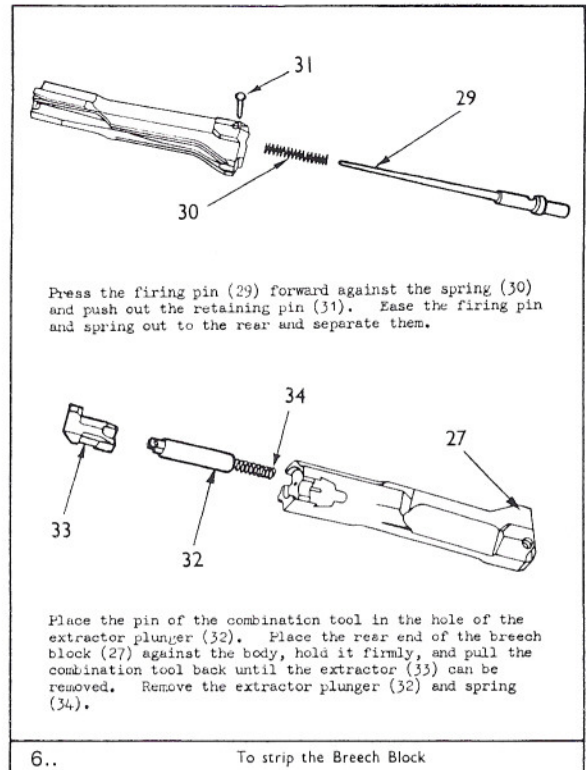
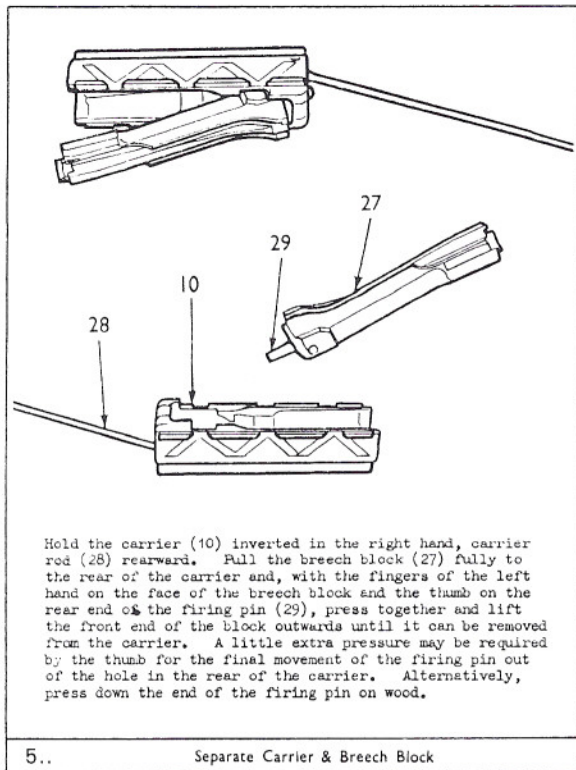
A PRACTICAL GUIDE

No special tools are necessary for field stripping the L1 rifle. Before stripping, after removing the magazine, ensure there is no round in the chamber. Pull the cocking handle back to the rear, hold it back and look into the breech and chamber, then release the cocking handle.

The rifle must be cocked and change lever put to safe before stripping begins. The change lever must not be moved from that position until the rifle is assembled or unless specifically stated. The trigger must not be pressed when the rifle is open except where stated.

STRIPPING—





ASSEMBLING —

To assemble the breech block: Put the extractor spring and plunger in their housing in the breech block. Place the pin of the combination tool in the hole in the plunger and the rear of the breech block against the body. Hold firmly, pull the combination tool back until the extractor can be inserted, ease the plunger forward until it engages the extractor to retain it to the breech block. Insert the firing pin and spring into the breech block in the recess, in the rear end of the pin, uppermost. Press forward until the recess is in line with the retaining pin holes, and push in the retaining pin.

To replace the breech block and carrier: Place the rear end of the firing pin in the hole in the carrier, press rearward and close the block into the carrier. Push the breech block fully forward along the carrier so that the locking bent is raised clear of the lower surface. Engage the guide ribs of the carrier in the grooves in the body and push the carrier fully forward. During this action, if the thumb is placed behind the breech block it will prevent the block from sliding rearward, causing a jam. Slide the body cover into position and close the rifle.

To replace piston and spring: Replace the spring on the piston, it will go on either way, and engage the end coils behind the bulge on the piston where it will be retained. Hold the rifle in a horizontal position and guide the piston, spring first and under control, slowly into the cylinder and push it fully home. The piston MUST NOT be dropped into the cylinder or it may strike the gas block and set up a burr on the piston which will subsequently damage the cylinder. Replace the gas plug in the position in which it was removed; press in its plunger as far as it will go and turn the plug until the narrow recess is uppermost. Release the plunger and ensure that it is properly engaged in its recess in the gas block.

Note on replacing the gas plug: The gas plug can be inserted in two different ways which affect the flow of gas onto the piston head. With the gas plug positioned back to front, this renders the rifle action single-shot, manually operated, for discharging grenades.

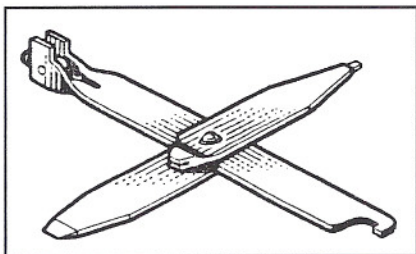
To replace the gas plug: Place the gas plug on the piston head with the narrow recesses on the side of the plug to the left. Push the plug in as far as it will go and turn it anti-clockwise until it stops. Then depress the wide end of the plunger and turn the plug anti-clockwise until the narrow recesses are towards you and the plunger engages. The plug is now set for firing ball ammunition or blank ammunition with the blank-fire attachment.

To set the plug for firing rifle grenades: Push in the plunger and turn the plug anti-clockwise through half a turn. The gas recesses are now towards the barrel and do not function. Always set the plug with the recesses uppermost unless you intend to fire grenades.

Fouled gas plug note: If the gas plug plunger gums up, place the tip of a ball round in the head recess to depress the plunger. If the gas plug itself is badly fouled and cannot be turned by hand, to remove, the back end of the bayonet blade can be inserted in the wide slot for the purpose of turning the fouled or seized gas plug, with plunger depressed.

When field assembling is completed, the rifle should be tested by putting the change lever to 'R' and then operating the working parts and the trigger.

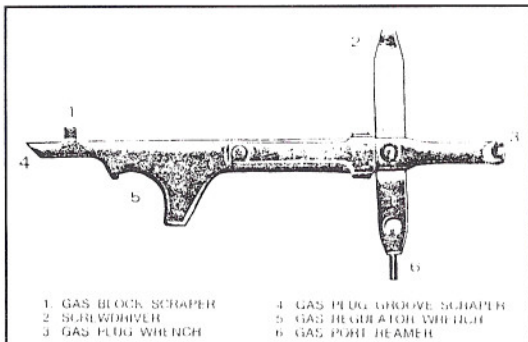
Loading in darkness: Manual recharging of the magazine without charger and clips, ensure that the bullet point faces the front of the magazine, determined by feeling the latch tab protrusion at the magazine front.



Tool, Combination, 7.62mm Rifle, Mk I.

Issued with the roll, cleaning, this tool contains screwdriver tips, gas regulator wrench, port reamer, foresight height adjuster and threaded end for the brass chamber brush.

Another useful tool for stripping the breech block was not as widely issued, the Compressing Tool, Extractor was more of an armourer's tool. This has a pivoted nib which depresses and removes the spring-loaded extractor. This tool is illustrated along with the breech block, on page 30 of 'S.L.R. - Australia's F.N. F.A.L.'



The Canadian combination tool at left is slightly larger than the British and Australian combination tool and it has additional scrapers and a gas plug wrench. Combination tools were issued with each rifle, in a tool roll that also contained a pull through with scraper on the weight, oil bottle, bristle brush and cleaning flannel.

PARTS MANUFACTURE IDENTIFICATION

United Kingdom—

∧	Government acceptance mark	✂	Typical British proof
UE	RSAF Enfield	18	Typical inspection mark
UB	B.S.A. Guns	D	RSAF Enfield
UF	ROF Fazakerley	D62	Enfield, 1962
FTR	Factory Thorough Repair	F59	Fazakerley, 1959
CR...A	Parts no. prefix, early production	B60	B.S.A. Guns, 1960

Canada—

CAL	Canadian Arsenals Ltd.	∇ P	Canadian proof
Ⓐ	Canadian Arsenals Ltd.	∇	Other Canadian marks often incorporate the maple leaf

Australia—

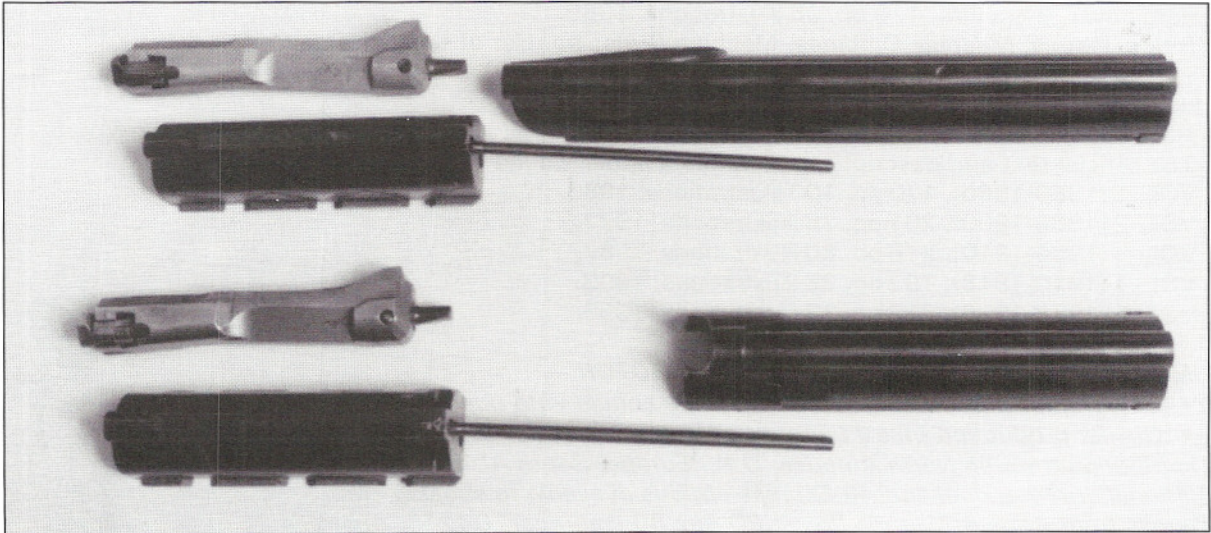
MA84	Lithgow, 1984	∇ P	Lithgow proof
SLAZ	Slazengers, Sydney	∇	Lithgow inspection mark
SAF	Small Arms Factory	L 43	Lithgow inspection mark

India—

RFI	Rifle Factory Ishapore	S^A	Indian ordnance
1A	Rifle designation	✂	Typical proof, often rough
ICR	Mark often found on parts	TD	Typical Indian inspection mark
IA	Inspector's mark	50	
is		A	
G		FR	Factory Repair

Other—

N^Z New Zealand



Proofs are usually electric pencil engraved on hardened surfaces e.g. breech blocks. Crossed flags are typically British and Australian, the maple leaf is Canadian. MOD Pattern Room, Nottingham

Other titles by this author—

'The LEE-ENFIELD STORY' *Skenneron*

Hard cover, 11 x 8¾in., 503 pp, nearly 1,000 illustrations, 1993. With dust jacket.

Updated and expanded 'British Service Lee'; many new illustrations. Spanning more than one hundred years, the standard reference on this renowned service rifle.

'The BROAD ARROW' *Skenneron*

Soft cover, 11 x 8¾in., 140 pp, c. 80 illustrations, 2001. Also special HC edition with dust jacket.

British & Empire factory production, proof, inspection, armourers, unit & issue markings.

'BRITISH & COMMONWEALTH BAYONETS' *Skenneron & Richardson*

Hard cover, 11 x 8¾in., 404 pp, approximately 1,300 illustrations, 1986.

Accepted as the standard reference on a popular subject, from 1650 to current issues.

British, Australian, Canadian, Indian, New Zealand and South African issues and manufacture.

'.303 No. 4 (T) SNIPER RIFLE' *Laidler & Skenneron*

An Armourer's Perspective; the Holland & Holland Connection.

Hard & Soft covers, 9½ x 6in., 126 pp, 75 illustrations, 1992.

A practical study of the No. 4 (T) and 7.62mm L42A1 rifle series.

'The ENFIELD .380 No. 2 REVOLVER' *Skenneron & Stamps*

Hard & Soft covers, 9½ x 6in., 126 pp, 80 illustrations, 1992.

A 'poor cousin' of the Webley, the first in-depth study of this model.

'AUSTRALIAN MILITARY RIFLES & BAYONETS' *Skenneron*

Hard & Soft covers, 9½ x 6in., 124 pp, 205 illustrations, 1988.

200 years of service longarms and bayonets, from Brown Bess to 5.56mm F88.

'AUSTRALIAN SERVICE MACHINEGUNS' *Skenneron*

Hard & Soft covers, 9½ x 6in., 122 pp, 150 illustrations, 1989.

100 years of machine & sub-machine guns, from .450 Gatling to 5.56mm Minimi.

'S.L.R. — AUSTRALIA'S F.N. F.A.L.' *Skenneron & Balmer*

Hard & Soft covers, 9½ x 6in., 122 pp, 200 illustrations, 1989.

The study of Australia's L1A1 service rifle, variants, parts lists, serial nos. &c.

'BRITISH SMALL ARMS OF WORLD WAR 2' *Skenneron*

Complete Guide to the Weapons, Maker's Codes & 1936-1946 Contracts.

Hard cover, 9½ x 6in., 110 pp, 36 illustrations, 1989.

Rifles, Pistols, Machine Carbines, Machine Guns, &c. List of the Wartime Codes.

'LIST OF CHANGES IN BRITISH WAR MATERIAL'

Hard covers, 8½ x 5½in., 5 volume series, each volume indexed, with master index in Vol. 5.

The official text and descriptions of Rifles, Pistols, Edged Weapons & Accoutrements.

VOL. 1 (1860-1866), 170 pp, 100 illustrations, 1980.

VOL. 2 (1886-1900), 201 pp, 75 illustrations, 1977.

VOL. 3 (1900-1910), 216 pp, 80 illustrations, 1987.

VOL. 4 (1910-1918), 192 pp, 35 illustrations, 1993.

VOL. 5 (1918-1926), 210 pp, 12 illustrations, 1998.

'INTERNATIONAL ARMS & MILITARIA COLLECTOR'—

- *Colour subscription magazine, 150 page annual with quarterly bulletins.*

- *Quality production on art paper, well illustrated and presented.*

Distribution through North America, U.K., Europe, South Africa & Australasia.

National, International and Air Express options available to subscribers.

Details from Arms & Militaria Press, PO Box 80, Labrador, Q4215, Australia.



For full listings, bulletin board & new titles, go to the Skenneron website— www.skenneron.com

SMALL ARMS IDENTIFICATION SERIES

Ian Skennerton

Projected Titles List—

7.62^{mm} L1 & C1 Rifles
.303 Vickers Machine Gun
Australian S.M.L.E. Variations
British Empire Cadet & Training Rifles
.303 Rifle, No. 1, S.M.L.E., Marks III and III*
.303 Rifle, No. 4 Marks I & I*, Marks 1/2, 1/3 & 2
7.62^{mm} L42A1 Sniper, L39 & Lee-Enfield Conversions
9^{mm} Austen Mk I & 9^{mm} Owen Mk I Sub-Machine Guns
.303 Magazine Lee-Metford & Magazine Lee-Enfield
.303 Pattern 1914 Rifle & Sniping Variants
British Service Sword & Lance Patterns
.450 & .303 Martini Rifles & Carbines
.303 Bren Light Machine Gun
.30 Browning Machine Gun
Special Service Lee-Enfields
.303 Lewis Machine Gun
.303 Rifle, No. 5 Mk I
.455 Pistol, Revolver, No. 1
.380 Enfield, Revolver, No. 2
.45 Thompson Sub-machine Gun
9^{mm} Sten Mk I & Mk II Machine Carbines
9^{mm} Sten Mk V & Mk VI Machine Carbines

... .. to be continued



SKENNERTON

www.skennerton.com